



Culver Boulevard Regional Project

The Culver Boulevard Regional Project, currently in Phase 2 of development, is moving along on schedule. The City has removed soil and is installing the stormwater storage gallery and infiltration system. To learn more about the project and/or to watch the live video feed, please visit: culvercity.org/culverproject.

To comply with Measure W and Prop 84 grant requirements (which are sources of funds being used to pay for the project), the Culver Boulevard Project must include an educational and outreach component. In an era of mobile devices and frequent technology use, the City has chosen to use interactive technology that will engage visitors. On October 26, 2020, Council approved staff to move forward with an agreement with Trigger Global Inc. for the Culver Boulevard Augmented Reality Outreach Project. Content will be designed with the goal of having visitors understand the importance of stormwater management; curbing pollutants; native Ballona Creek species; mobility and accessibility; hydrological features, including the Ballona Creek Watershed and Santa Monica Bay; and the physical features of the underground infiltration galleries and retention basins. The four themes that will incorporate augmented reality are:

1. Sepulveda Gateway: Introduction
2. Elenda Street Plaza: Urban Connection Story
3. Harter Avenue Plaza: Water Narrative
4. Huron Avenue Plaza: Cultural Narrative

The outreach component of the project should be completed by end of summer of 2021.

Grants Received

- Prop 84: \$7.8 million
- Metropolitan Water District: \$540,000

This Underground Storage Facility (USF) is designed to capture about 3 million gallons of urban water runoff to filter out harmful elements and reuse the water for irrigation of the median and neighboring park. The larger USF will be 538 feet long by 60 feet wide, and another smaller USF will be 130 feet long by 40 feet wide. Each individual cell is 11 feet tall and weighs 45,000 pounds.



Washington Boulevard Project Update

The updated design based on community feedback is complete. The design was posted on the city's website in December for public comment. It is anticipated to go to Council in May 2021 to award a construction contract. Construction is tentatively expected to begin in August 2021. The project will take about 12 months to complete.



What is the Project?

Divert stormwater and urban runoff from storm drain

Pretreat flows

Pump flows to subsurface storage system

Divert flows to sanitary sewer and offset median irrigation

Grants Received

- Open Space Grant: \$767,137
- Measure W: \$1.2 million (for the next 3 years)

Mesmer Low-Flow Diversion Project

The City was recently awarded funding for the Mesmer Low-Flow Diversion Project. The low-flow diversion system diverts dry weather runoff from Centinella Creek into the Mesmer Pump Station. Dry weather runoff is water waste caused by overwatering and/or washing your car. This water then flows from urban landscapes, collecting pollutants along its way into the storm drain systems that lead to the beach. This project intends to divert the dry weather runoff to the Mesmer Pump Station. The diverted water will be pumped into an existing sewer main for transfer to the City of Los Angeles' Hyperion Water Reclamation Plant where it will be treated and recycled. This project will help supply demands for recycled water and improve our region's goal of water resiliency. The project will also reduce the current bacteria levels and other pollutants in Ballona Creek.



Stormwater Quality Master Plan



On March 18, 2019, City Council approved an agreement with Blue Ocean Civil Consulting for the development of the Stormwater Quality Master Plan. The objective of the Master Plan is to develop a short-term (5-year) and long-term (10-year) planning tool that will identify potential Regional Projects, Green Streets Projects, and Low Impact Development Projects to collectively meet the City's water quality compliance goals.

Based on planning estimates from the Ballona Creek Enhanced Watershed Management Program, the City will need to invest approximately \$140 million in implementation of capital stormwater projects to meet

water quality compliance. Understanding the magnitude of compliance costs, the Enhanced Watershed Management Plan highly recommends that stormwater projects have multi-benefit functions, such as to capture, treat, and reuse in order to demonstrate water resource sustainability and resiliency.

Blue Ocean Civil Consulting has determined that the city would need to capture, divert, and clean approximately 99 acre-feet (ACFT) of stormwater and/or urban runoff in order to comply with existing stormwater requirements. (An acre-foot is about 326,000 gallons — an amount that would cover one acre, which is about the size of a football field, one foot deep.) As a result, Blue Ocean has identified 441 project opportunities. Top priority projects are those which offer both high storage capacity and multiple benefits.

The City is working on next steps to engage the community in determining which projects would benefit Culver City's residential and business community.

Multi-Jurisdictional Hazard Mitigation Plan Update

The City received Federal Emergency Management Agency funds to support the City of Culver City and Culver City Unified School District to address mitigation items associated with drought, flooding, and wildfire as identified in the Multi-Jurisdictional Hazard Mitigation Plan developed in 2017. The City saw an opportunity to expand the Stormwater Quality Master Plan to include mitigation action items from the Hazard Mitigation Plan because there were overlapping features, such as low impact development, identifying and pursuing alternative water sources, evaluating the effectiveness of city-owned drainage infrastructure, and developing additional water infrastructure. The plan should be finalized in 2021.



Ballona Creek Bike Path Murals

The Ballona Creek Bike Path Murals are now complete. The City's Public Works and Environmental Programs and Operations Division teamed up with local artist Lindsay Carron and students from Culver City High School's Audio, Visual and Performing Arts (AVPA) to develop ground murals along the Ballona Creek bike path entrances. The murals raise awareness about the impacts of stormwater on our environment and highlight the historical significance of Ballona Creek and its connection to the Pacific Ocean.

Check out the murals at these locations:

- Duquesne Avenue Bike Path Entrance/Exit
- Overland Avenue East Bike Path Entrance/Exit
- Overland Avenue West Bike Path Entrance/Exit
- Sepulveda Boulevard East Bike Path Entrance/Exit





Credit: Daisy-Daisy | iStock | Getty Images Plus



Senate Bill 1383, California's Short-Lived Climate Pollutants Reduction Act, Fundamentally Changes How Residential and Business Organics Will Be Managed

The Short-Lived Climate Pollutants Reduction Act was signed into law in September 2016. This law requires a 75% reduction in organics sent to California landfills by 2025 to reduce greenhouse gas emissions. In addition, the law requires that no less than 20% of edible food which is currently disposed be recovered for human consumption by 2025.

City Efforts

In order to implement programs that will accomplish this regulatory goal, the City has a great deal of work ahead. For example, the City received a grant for \$500,000 from CalRecycle to develop a food recovery program. The City has used funds to purchase a refrigerated truck that will collect donated edible food and deliver it to non-profit organizations in need. The City has met with possible partners, such as the Culver City Unified School District, to develop a sustainable program.

In addition, staff have been determining organic waste generators, both residents and businesses, that are required to have an organics collection program.

Business and Residential Efforts

Being in compliance with this new legislation will require a community-wide effort. Therefore, we need your help.

Residents will need to make a greater effort to place their food scraps into their green bin. Throwing away food scraps in a trash cart will no longer be acceptable under this new law.

Businesses that generate 2 or more cubic yards of trash will need to order a green bin. There are some exceptions, and the Public Works Environmental Programs and Operations Division is ready to help your business navigate these new requirements and choose the best possible solution. Call 310-253-6400 to speak to a city staff member.



We've Got a Plastics Problem

And You Can Help Us Solve It!

The Problem

Culver City's recycling has a plastics problem and it is dirtying our clean recyclables. Roughly one in three items placed in the recycling container is NOT recyclable through our curbside program. These non-recyclable items include:

- Plastic bags
- Film plastics
- Styrofoam packing materials
- Soiled cardboard (such as paper to-go containers which belong in the green bin)
- Wood from small construction projects

This contamination is impacting the community's ability to meet recycling goals.

When non-recyclable plastics go into recycling bins, they create a lot of problems at sorting facilities. They get tangled in equipment. They contaminate other recyclables. They take staff time to remove from the sorting line. And, they must go to the landfill in the end. Meaning, we spent extra money to sort and dispose of trash.

The Solution: Recycle Right

In Culver City, we ACCEPT these plastic items for recycling:

- Plastic bottles
- Jugs
- Jars
- Tubs

These will be marked with numbers 1-5 and include plastic food, beverage, personal care, and cleaner containers. Here's an easy way to remember: Recycle by shape. If it is shaped like a bottle, a jug, a jar, or a tub, then YES, recycle it.

If it isn't shaped like a bottle, jug, jar, or tub, toss it into the trash. (Or better yet, avoid buying it in the first place!)

Help us solve our plastics problem in Culver City. Recycling by shape — bottles, jugs, jars, and tubs — and make sure they are empty, rinsed, and dry before they go into the bin. Recycle these containers with their lids attached. (Dispose of loose caps, foil lids, pumps, and sprayers.)

To learn more about plastic recycling or to check on a specific material, download our Recycle Coach app or use the "What Goes Where?" tool at our website, culvercity.org/recycle.

Thanks for helping us solve our plastics problem!

YES!

Recyclable Plastics



NO!

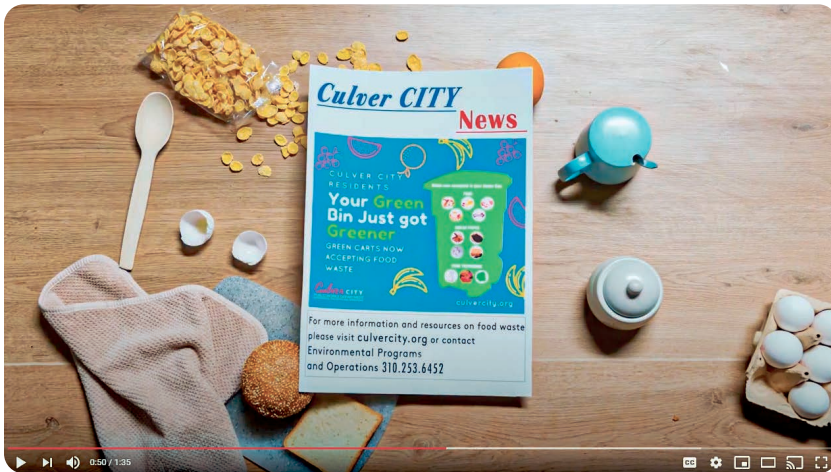
Non-Recyclable Plastics (Avoid, Reuse, or Place in Trash)



New Outreach Section on Recycling and Trash Website

The City has been actively working on updating its website. As a result, the Public Works Environmental Programs and Operations Division added an educational resources page, located at culvercity.org/recycle. This site includes educational videos about Household Hazardous Waste (HHW), residential food waste, a school friendly composting video called "Squirmy Wormy," printable posters, and the story of Olive.

Olive, Culver City's Environmental Mascot, came to Culver City as a young octopus when she was swept up by a big wave and traveled down Ballona Creek. It is here in Culver City where she met the Recycling Raccoons and learned about Recycling Right. Check out Olive's Amazing Adventures by downloading the coloring book.



This video introduces residents to our curbside food waste program.

Six Steps



A "Worm Composting" guide and "Squirmy Wormy" video show how easy and fun vermicomposting can be.



Our printable posters will help you Recycle Right.



The coloring book, "Olive's Amazing Adventures," takes the reader on a recycling journey with our mascot, Olive the Octopus.

CRV Take-Back Program

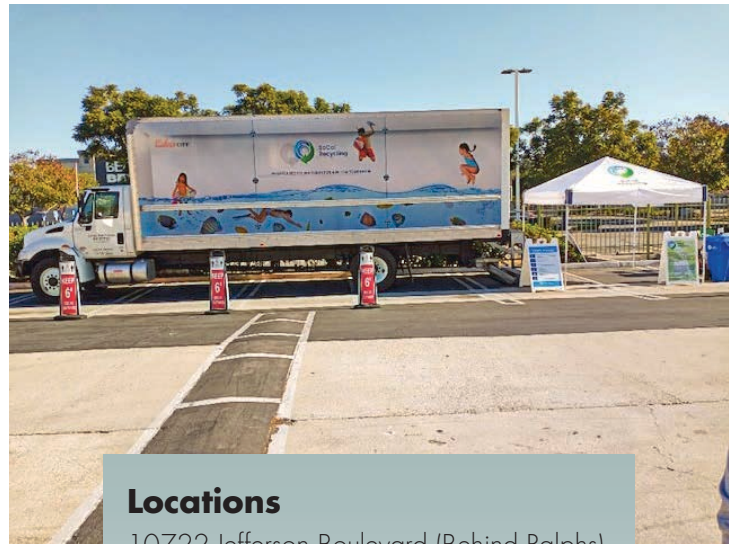
SoCal Recycling has been selected by Culver City to participate in a first-of-its-kind mobile recycling program. The SoCal Recycling mobile recycling center will be available in different locations throughout Culver City on different days, making it easier for the community to recycle and redeem their CRV containers.

To prevent the spread of COVID, precautions will be taken during the CRV transaction. Precautions include staying in your car, wearing a mask, and, if not feeling well, staying home please. For a list of COVID-19 rules, please visit culvercity.org/Services/Trash-Recycling/CRV-Take-Back.

Recyclables include the following products packaged in aluminum, glass, plastic, or bimetal beverage containers. For redemption, please ensure containers are empty. Payments will be made onsite.

Allowed recyclables include containers from items such as:

- Beer and Malt Beverages
- Wine Coolers and Distilled Spirit Coolers
- Carbonated Fruit Drinks
- Non-Carbonated Fruit Drinks
- Carbonated Water
- Non-Carbonated Water
- Coffee and Tea Beverages
- Carbonated Soft Drinks
- Vegetable Juice (16 oz. and under)
- Sports Drinks



Locations

10722 Jefferson Boulevard (Behind Ralphs)

- Monday: 8 a.m. to 4:30 p.m.
- Tuesday: 8 a.m. to 4:30 p.m.
- Saturday: 8 a.m. to 4:30 p.m.

11030 Jefferson Boulevard

- Wednesday: 8 a.m. to 4:30 p.m.
- Thursday: 8 a.m. to 4:30 p.m.
- Friday: 8 a.m. to 4:30 p.m.

Do you have a comment or suggestion?

Members of the Culver City community are always welcome to provide valuable comments or suggestions on city services. You can make comments at Culver City's Virtual City Hall 24 hours a day, 7 days a week, from the comfort of your own home or office. This site gives residents, businesses, and visitors access to City Hall. Your request or comment will immediately and automatically be routed to the proper City department for prompt resolution or attention, and you will receive notification of the status of your request via email or phone. To get started, go to the Customer Service Center icon on the home page menu bar at CulverCity.org.

Culver CITY



Public Works Department
Environmental Programs and Operations
9505 West Jefferson Boulevard
Culver City, CA 90232
Customer Service: 310-253-6400
CulverCity.org