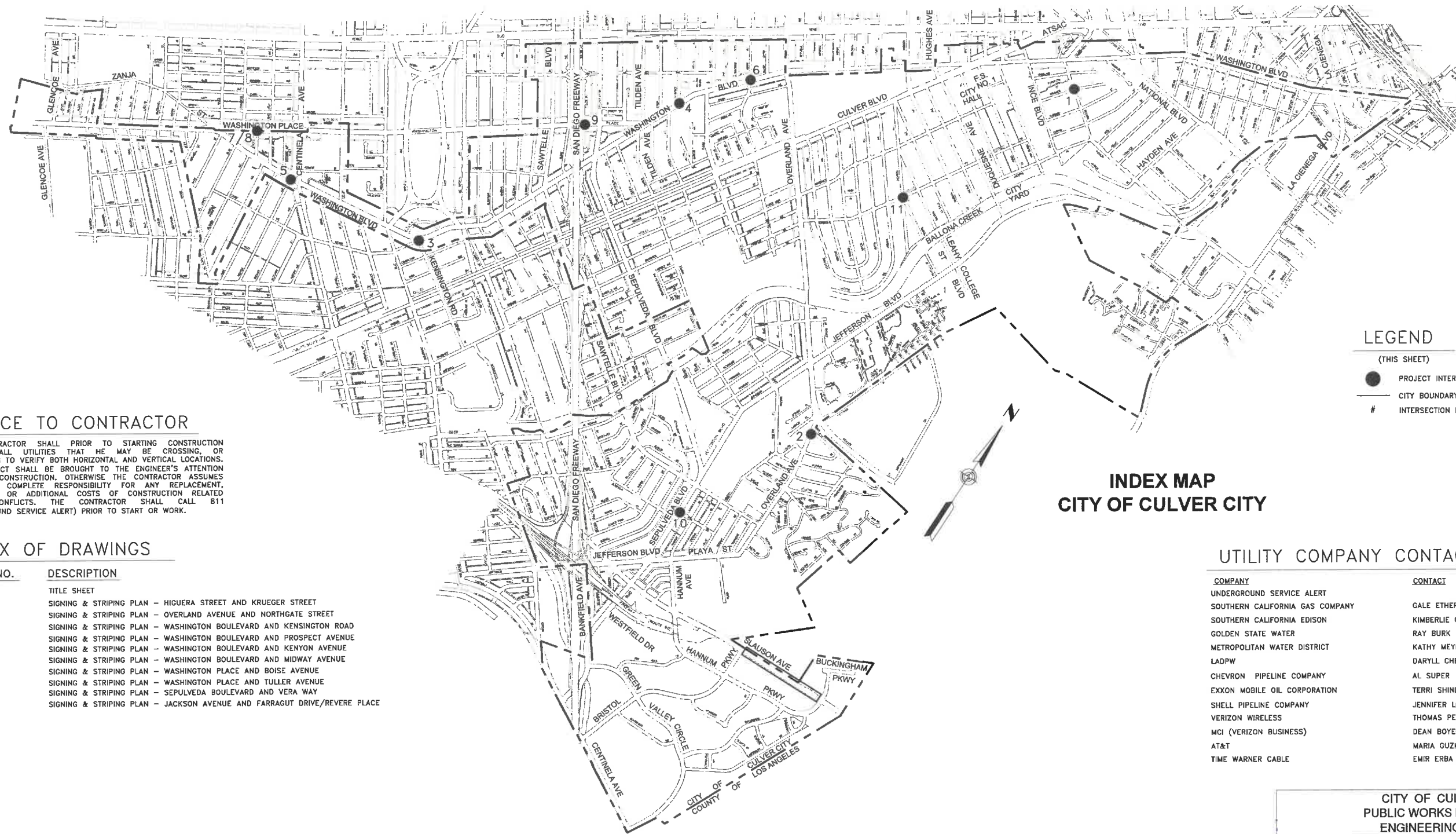


CITY OF CULVER CITY

SIGNING AND STRIPING PLANS FOR UNSIGNALIZED INTERSECTIONS SAFETY IMPROVEMENT PROJECT



LEGEND

(THIS SHEET)

- PROJECT INTERSECTION LOCATIONS
- CITY BOUNDARY
- # INTERSECTION NUMBER

**INDEX MAP
CITY OF CULVER CITY**

NOTICE TO CONTRACTOR

THE CONTRACTOR SHALL PRIOR TO STARTING CONSTRUCTION UNCOVER ALL UTILITIES THAT HE MAY BE CROSSING, OR PARALLELING TO VERIFY BOTH HORIZONTAL AND VERTICAL LOCATIONS. ANY CONFLICT SHALL BE BROUGHT TO THE ENGINEER'S ATTENTION PRIOR TO CONSTRUCTION. OTHERWISE THE CONTRACTOR ASSUMES SOLE AND COMPLETE RESPONSIBILITY FOR ANY REPLACEMENT, RELOCATION OR ADDITIONAL COSTS OF CONSTRUCTION RELATED UTILITY CONFLICTS. THE CONTRACTOR SHALL CALL 811 (UNDERGROUND SERVICE ALERT) PRIOR TO START OR WORK.

INDEX OF DRAWINGS

SHEET NO.	DESCRIPTION
01	TITLE SHEET
02	SIGNING & STRIPING PLAN - HIGUERA STREET AND KRUEGER STREET
03	SIGNING & STRIPING PLAN - OVERLAND AVENUE AND NORTHGATE STREET
04	SIGNING & STRIPING PLAN - WASHINGTON BOULEVARD AND KENSINGTON ROAD
05	SIGNING & STRIPING PLAN - WASHINGTON BOULEVARD AND PROSPECT AVENUE
06	SIGNING & STRIPING PLAN - WASHINGTON BOULEVARD AND KENYON AVENUE
07	SIGNING & STRIPING PLAN - WASHINGTON BOULEVARD AND MIDWAY AVENUE
08	SIGNING & STRIPING PLAN - WASHINGTON PLACE AND BOISE AVENUE
09	SIGNING & STRIPING PLAN - WASHINGTON PLACE AND TULLER AVENUE
10	SIGNING & STRIPING PLAN - SEPULVEDA BOULEVARD AND VERA WAY
11	SIGNING & STRIPING PLAN - JACKSON AVENUE AND FARRAGUT DRIVE/REVERE PLACE

UTILITY COMPANY CONTACTS

COMPANY	CONTACT	PHONE NO.
UNDERGROUND SERVICE ALERT		811
SOUTHERN CALIFORNIA GAS COMPANY	GALE ETHERLY	(310) 687-2020
SOUTHERN CALIFORNIA EDISON	KIMBERLIE GURULE	(714) 796-9932
GOLDEN STATE WATER	RAY BURK	(562) 907-9200
METROPOLITAN WATER DISTRICT	KATHY MEYER	(213) 217-7663
LADPW	DARYLL CHENOWETH	(626) 458-3109
CHEVRON PIPELINE COMPANY	AL SUPER	(310) 669-4014
EXXON MOBILE OIL CORPORATION	TERRI SHINDE	(310) 212-1794
SHELL PIPELINE COMPANY	JENNIFER LONGVILLE	(310) 816-2063
VERIZON WIRELESS	THOMAS PEARSON	(310) 264-5125
MCI (VERIZON BUSINESS)	DEAN BOYERS	(972) 729-6322
AT&T	MARIA GUZMAN	(213) 787-9996
TIME WARNER CABLE	EMIR ERBA	(310) 216-3658

**CITY OF CULVER CITY
PUBLIC WORKS DEPARTMENT
ENGINEERING DIVISION**

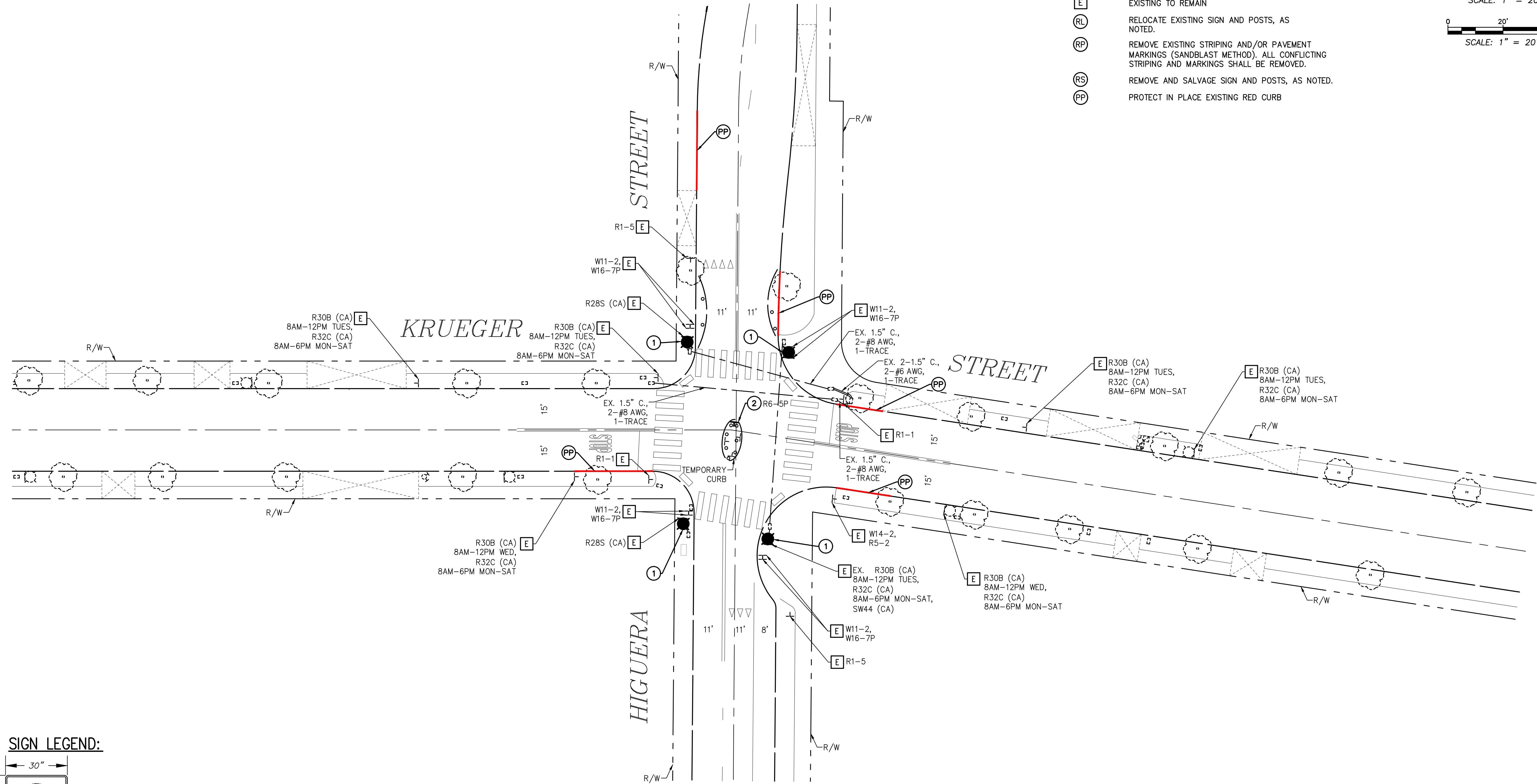
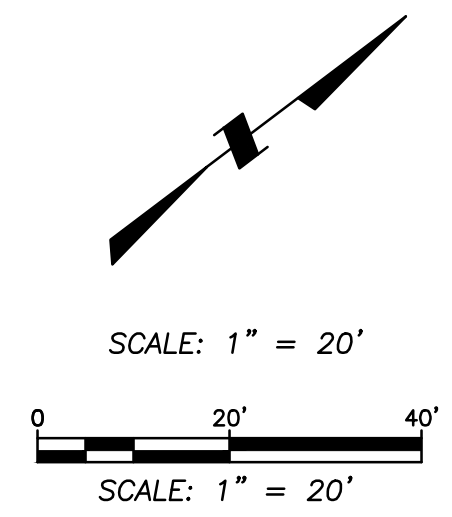
UNSIGNALIZED INTERSECTIONS SAFETY
IMPROVEMENT PROJECT PS028

CONSTRUCTION NOTES (FOR THIS SHEET)

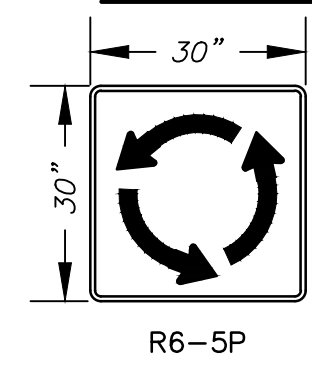
- ① PROTECT IN PLACE EXISTING ACORN LUMINAIRE. REMOVE AND SALVAGE EXISTING HPSV LUMINAIRE. FURNISH AND INSTALL NEW LED LUMINAIRE (XX WATT). (SCE COORDINATION-TBD)
- ② FURNISH AND INSTALL SIGN (AS NOTED) ON SINGLE POST PER CALTRANS STD PLAN RS4.

LEGEND:

- ⊥ EXISTING SIGN
- ⊥ PROPOSED SIGN
- E EXISTING TO REMAIN
- RL RELOCATE EXISTING SIGN AND POSTS, AS NOTED.
- RP REMOVE EXISTING STRIPING AND/OR PAVEMENT MARKINGS (SANDBLAST METHOD). ALL CONFLICTING STRIPING AND MARKINGS SHALL BE REMOVED.
- RS REMOVE AND SALVAGE SIGN AND POSTS, AS NOTED.
- PP PROTECT IN PLACE EXISTING RED CURB



SIGN LEGEND:



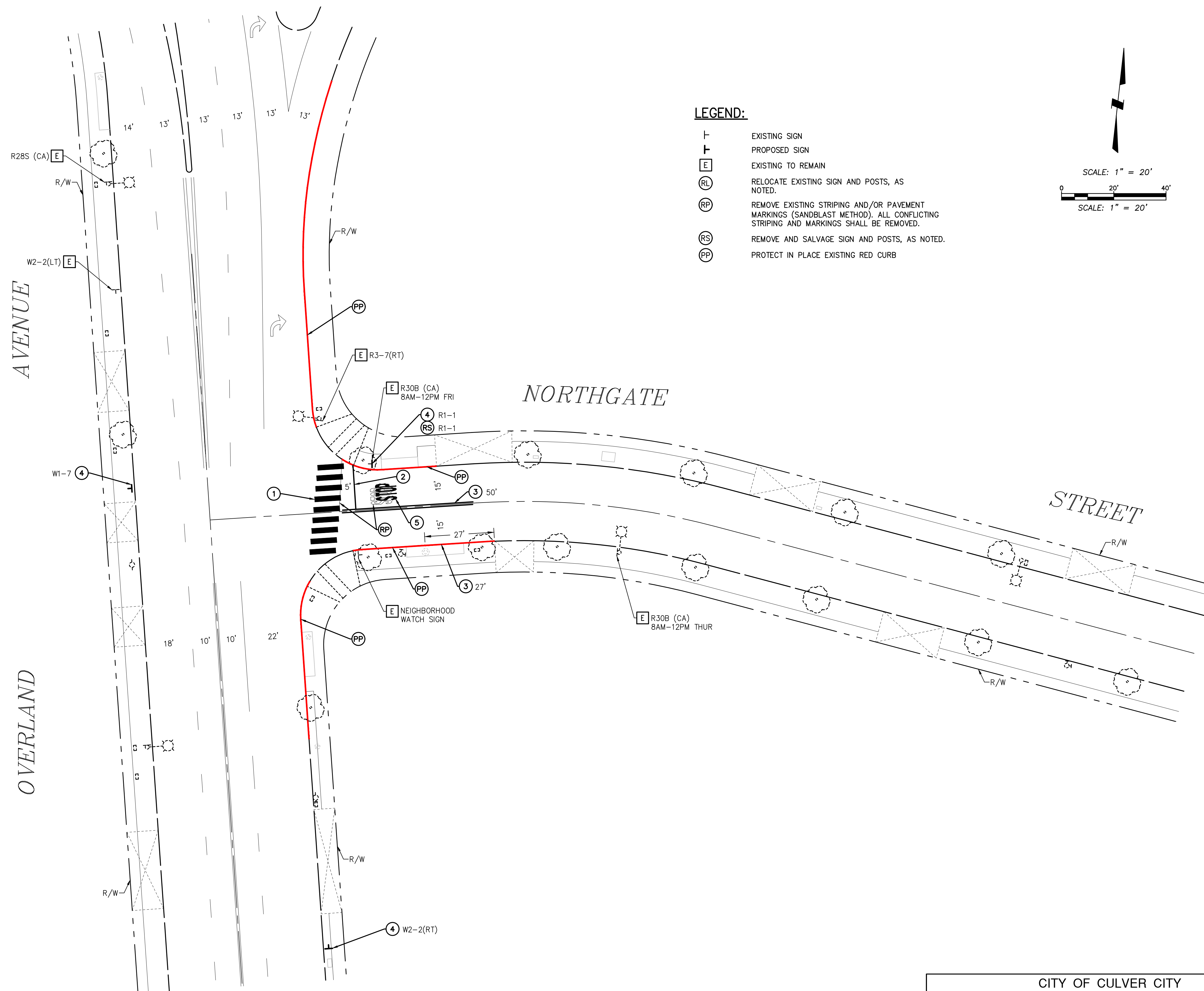
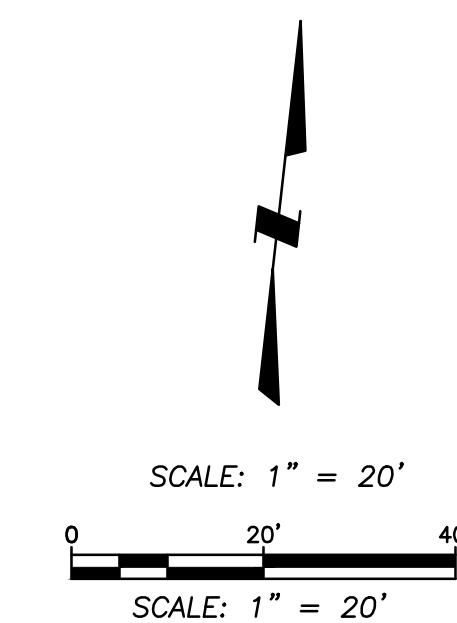
CITY OF CULVER CITY
 PUBLIC WORKS DEPARTMENT
 ENGINEERING DIVISION
 UNSIGNALIZED INTERSECTIONS SAFETY
 IMPROVEMENT PROJECT PS028

CONSTRUCTION NOTES (FOR THIS SHEET)

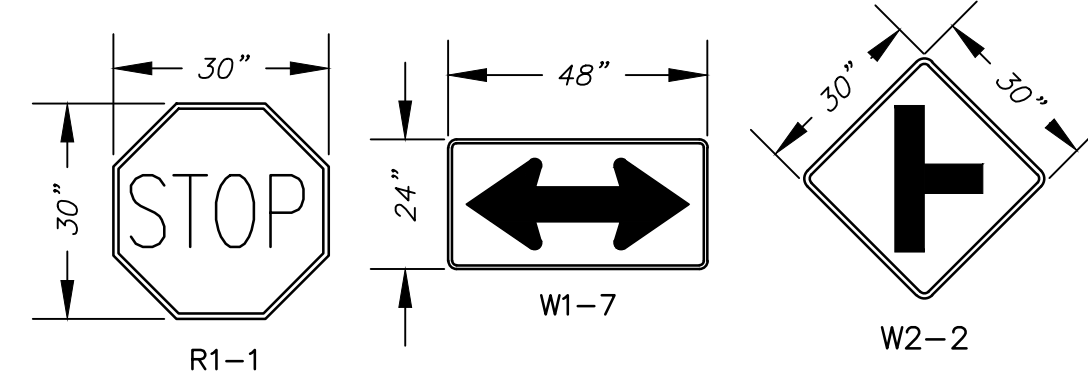
- ① CONTRACTOR TO INSTALL THERMOPLASTIC "CONTINENTAL" STYLE CROSSWALK 10' WIDTH FROM INSIDE TO INSIDE OF 12" SOLID YELLOW THERMOPLASTIC STRIPE PER CALTRANS STD PLAN A24F OR AS DIRECTED BY THE ENGINEER. ALL CROSSWALK MARKINGS SHALL BE THERMOPLASTIC AND APPLIED PER THE SPECIAL PROVISIONS.
- ② CONTRACTOR TO INSTALL THERMOPLASTIC 12" WHITE RETROREFLECTIVE LIMIT LINE PER CALTRANS STD. PLAN A24E OR AS DIRECTED BY THE ENGINEER.
- ③ CONTRACTOR TO INSTALL THERMOPLASTIC 4" DOUBLE YELLOW RETROREFLECTIVE CENTERLINE PER CALTRANS STD. PLAN A20A, DETAIL 22, OR AS DIRECTED BY THE ENGINEER.
- ④ FURNISH AND INSTALL SIGN (AS NOTED) ON SINGLE POST PER CALTRANS STD PLAN RS4.
- ⑤ CONTRACTOR TO INSTALL THERMOPLASTIC WHITE RETROREFLECTIVE "STOP" MARKINGS PER CALTRANS STD. PLAN A24D OR AS DIRECTED BY THE ENGINEER.
- ⑥ CONTRACTOR TO PAINT RED CURB.

LEGEND:

- ┆ EXISTING SIGN
- ┆ PROPOSED SIGN
- [E] EXISTING TO REMAIN
- (RL) RELOCATE EXISTING SIGN AND POSTS, AS NOTED.
- (RP) REMOVE EXISTING STRIPING AND/OR PAVEMENT MARKINGS (SANDBLAST METHOD). ALL CONFLICTING STRIPING AND MARKINGS SHALL BE REMOVED.
- (RS) REMOVE AND SALVAGE SIGN AND POSTS, AS NOTED.
- (PP) PROTECT IN PLACE EXISTING RED CURB



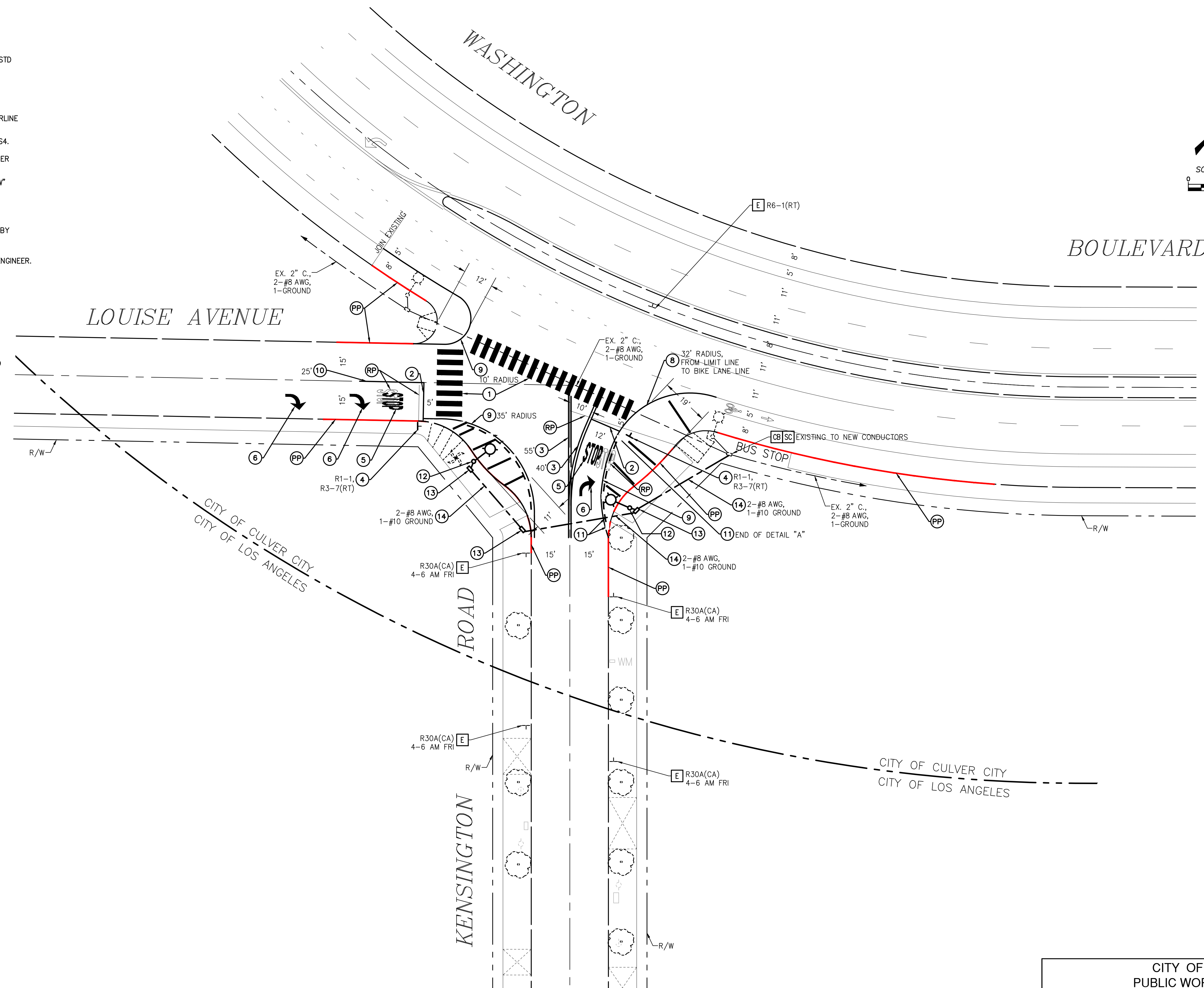
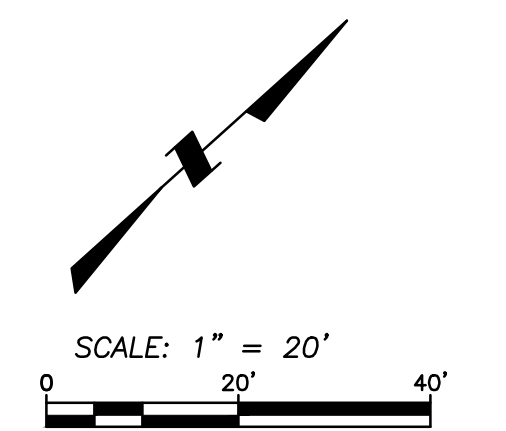
SIGN LEGEND:



CITY OF CULVER CITY
 PUBLIC WORKS DEPARTMENT
 ENGINEERING DIVISION
 UNSIGNALIZED INTERSECTIONS SAFETY
 IMPROVEMENT PROJECT PS028

CONSTRUCTION NOTES (FOR THIS SHEET)

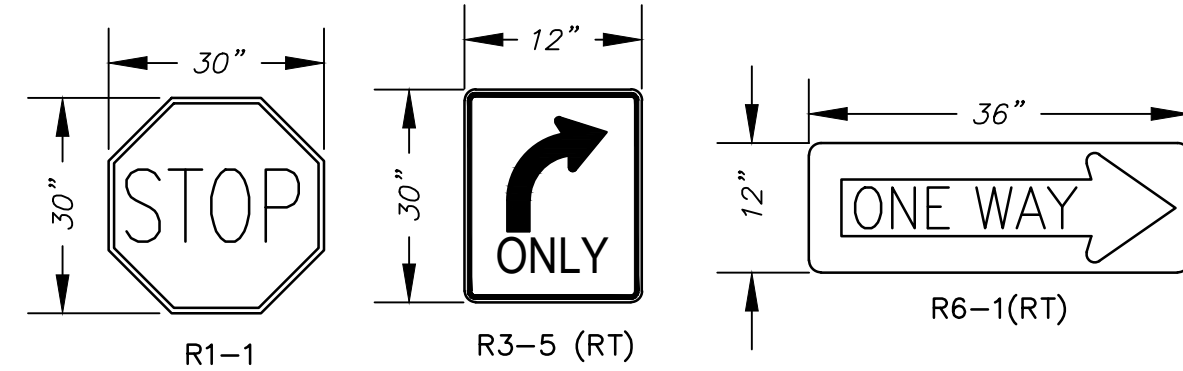
- 1 CONTRACTOR TO INSTALL THERMOPLASTIC "CONTINENTAL" STYLE CROSSWALK 10' WIDTH FROM INSIDE TO INSIDE OF 12" SOLID YELLOW THERMOPLASTIC STRIPE PER CALTRANS STD PLAN A24F OR AS DIRECTED BY THE ENGINEER. ALL CROSSWALK MARKINGS SHALL BE THERMOPLASTIC AND APPLIED PER THE SPECIAL PROVISIONS.
- 2 CONTRACTOR TO INSTALL THERMOPLASTIC 12" WHITE RETROREFLECTIVE LIMIT LINE PER CALTRANS STD. PLAN A24E OR AS DIRECTED BY THE ENGINEER.
- 3 CONTRACTOR TO INSTALL THERMOPLASTIC 4" DOUBLE YELLOW RETROREFLECTIVE CENTERLINE PER CALTRANS STD. PLAN A20A, DETAIL 22, OR AS DIRECTED BY THE ENGINEER.
- 4 FURNISH AND INSTALL SIGN (AS NOTED) ON SINGLE POST PER CALTRANS STD PLAN RS4.
- 5 CONTRACTOR TO INSTALL THERMOPLASTIC WHITE RETROREFLECTIVE "STOP" MARKINGS PER CALTRANS STD. PLAN A24D OR AS DIRECTED BY THE ENGINEER.
- 6 CONTRACTOR TO INSTALL THERMOPLASTIC WHITE RETROREFLECTIVE "TYPE IV (R) ARROW" MARKINGS PER CALTRANS STD. PLAN A24A OR AS DIRECTED BY THE ENGINEER.
- 7 CONTRACTOR TO INSTALL THERMOPLASTIC WHITE RETROREFLECTIVE "TYPE I 10' ARROW" MARKINGS PER CALTRANS STD. PLAN A24A OR AS DIRECTED BY THE ENGINEER.
- 8 CONTRACTOR TO PAINT 4" WHITE RETROREFLECTIVE RIGHT EDGELINE, OR AS DIRECTED BY THE ENGINEER.
- 9 CONTRACTOR TO INSTALL THERMOPLASTIC 4" WHITE RETROREFLECTIVE RIGHT EDGELINE (BULB-OUT) PER CALTRANS STD. PLAN A20B, DETAIL 27B, OR AS DIRECTED BY THE ENGINEER.
- 10 CONTRACTOR TO INSTALL THERMOPLASTIC 4" - YELLOW RETROREFLECTIVE CENTERLINE.
- 11 INSTALL CITY FURNISHED WHEEL STOPS
- 12 FURNISH AND INSTALL STREET LIGHTING, POLE, LUMINAIRE MAST ARM, AND LUMINAIRE (XX WATT). CONSTRUCT FOUNDATION. (SEE COORDINATION-TBD)
- 13 FURNISH AND INSTALL NEW NO. 5 PULL BOX. RECONSTRUCT SIDEWALK OR SURFACE TO MATCH EXISTING.
- 14 INSTALL 2" SCHEDULE 80 PVC CONDUIT WITH CONDUCTORS, AS SHOWN.



LEGEND:

- ⊥ EXISTING SIGN
- ⊥ PROPOSED SIGN
- [E] EXISTING TO REMAIN
- (RL) RELOCATE EXISTING SIGN AND POSTS, AS NOTED.
- (RP) REMOVE EXISTING STRIPING AND/OR PAVEMENT MARKINGS (SANDBLAST METHOD). ALL CONFLICTING STRIPING AND MARKINGS SHALL BE REMOVED.
- (RS) REMOVE AND SALVAGE SIGN AND POSTS, AS NOTED.
- (PP) PROTECT IN PLACE EXISTING RED CURB

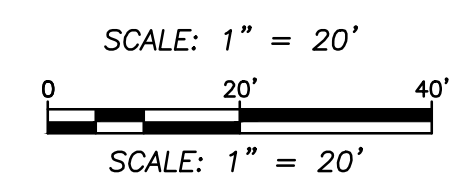
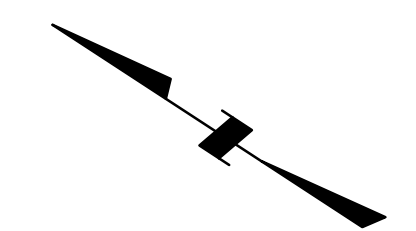
SIGN LEGEND:



CITY OF CULVER CITY
PUBLIC WORKS DEPARTMENT
ENGINEERING DIVISION
UNSIGNALIZED INTERSECTIONS SAFETY
IMPROVEMENT PROJECT PS028

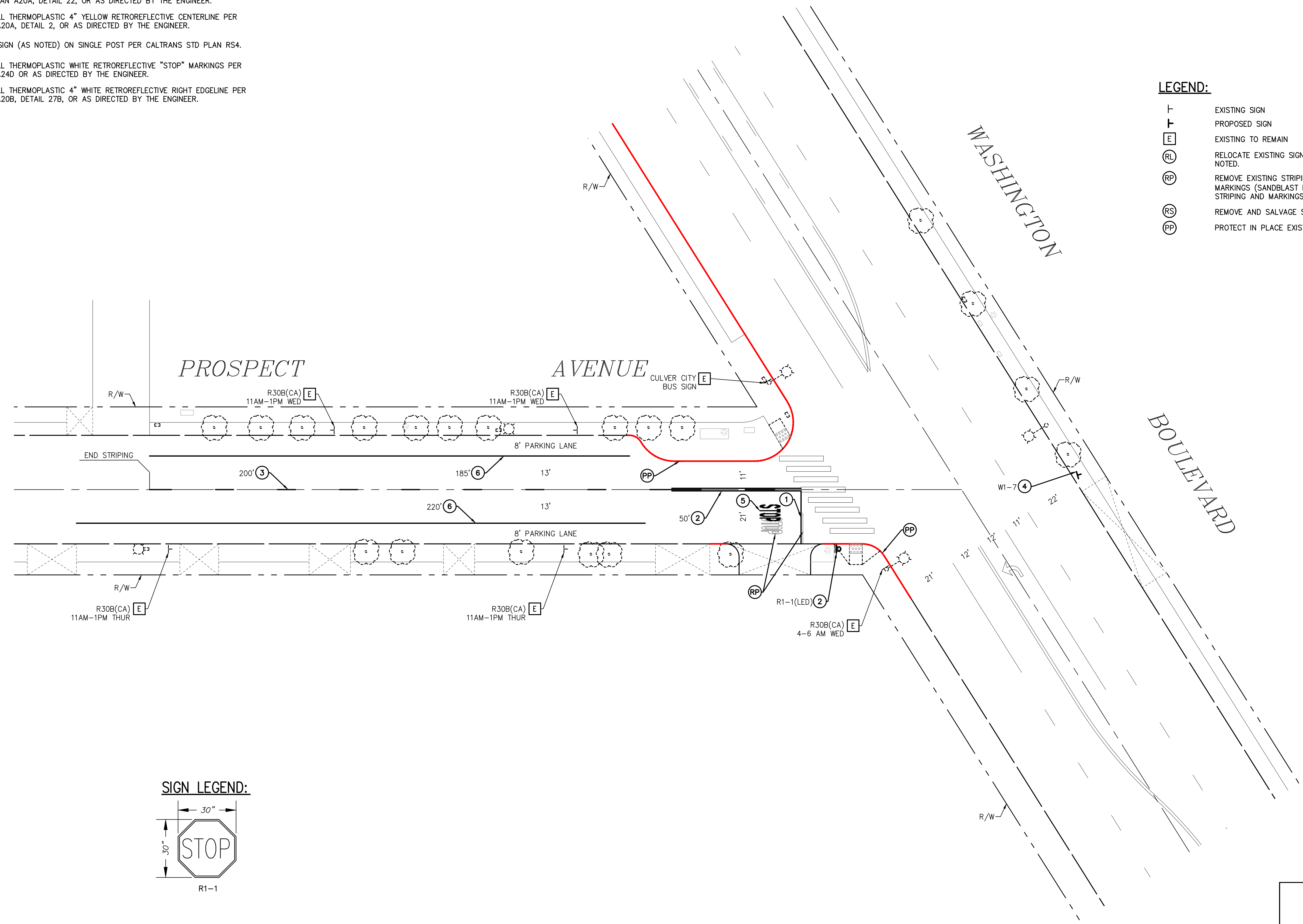
CONSTRUCTION NOTES (FOR THIS SHEET)

- ① CONTRACTOR TO INSTALL THERMOPLASTIC 12" WHITE RETROREFLECTIVE LIMIT LINE PER CALTRANS STD. PLAN A24E OR AS DIRECTED BY THE ENGINEER.
- ② CONTRACTOR TO INSTALL THERMOPLASTIC 4" DOUBLE YELLOW RETROREFLECTIVE CENTERLINE PER CALTRANS STD. PLAN A20A, DETAIL 22, OR AS DIRECTED BY THE ENGINEER.
- ③ CONTRACTOR TO INSTALL THERMOPLASTIC 4" YELLOW RETROREFLECTIVE CENTERLINE PER CALTRANS STD. PLAN A20A, DETAIL 2, OR AS DIRECTED BY THE ENGINEER.
- ④ FURNISH AND INSTALL SIGN (AS NOTED) ON SINGLE POST PER CALTRANS STD PLAN RS4.
- ⑤ CONTRACTOR TO INSTALL THERMOPLASTIC WHITE RETROREFLECTIVE "STOP" MARKINGS PER CALTRANS STD. PLAN A24D OR AS DIRECTED BY THE ENGINEER.
- ⑥ CONTRACTOR TO INSTALL THERMOPLASTIC 4" WHITE RETROREFLECTIVE RIGHT EDGELINE PER CALTRANS STD. PLAN A20B, DETAIL 27B, OR AS DIRECTED BY THE ENGINEER.

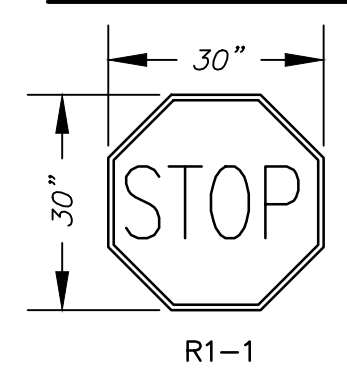


LEGEND:

- ┆ EXISTING SIGN
- ┆ PROPOSED SIGN
- [E] EXISTING TO REMAIN
- (RL) RELOCATE EXISTING SIGN AND POSTS, AS NOTED.
- (RP) REMOVE EXISTING STRIPING AND/OR PAVEMENT MARKINGS (SANDBLAST METHOD). ALL CONFLICTING STRIPING AND MARKINGS SHALL BE REMOVED.
- (RS) REMOVE AND SALVAGE SIGN AND POSTS, AS NOTED.
- (PP) PROTECT IN PLACE EXISTING RED CURB



SIGN LEGEND:



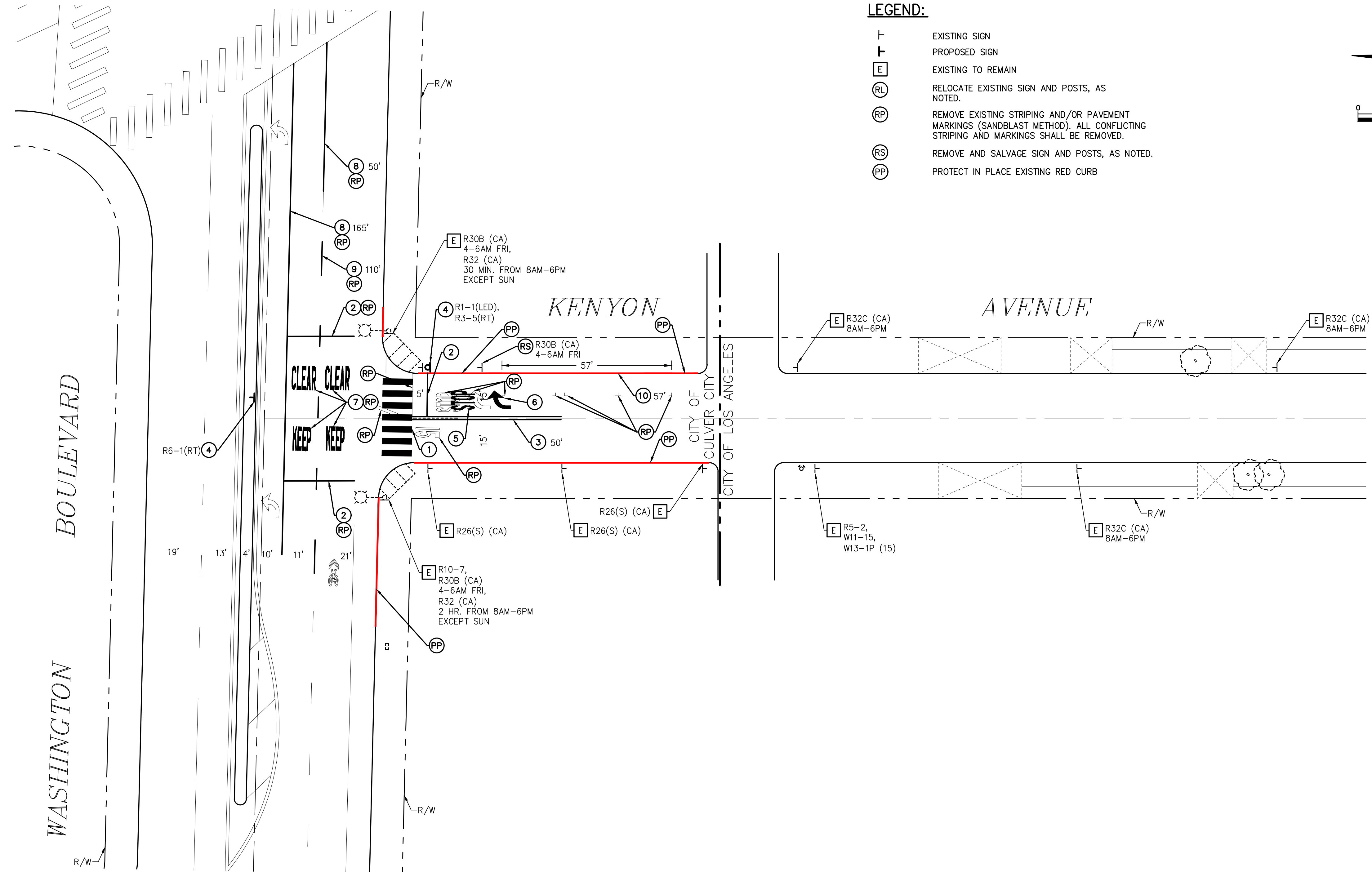
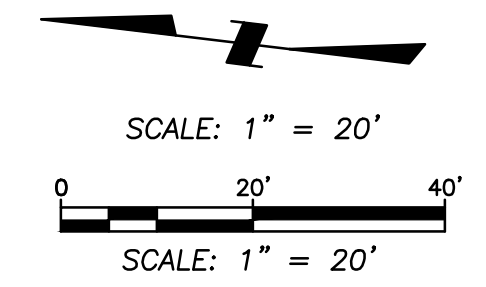
CITY OF CULVER CITY
 PUBLIC WORKS DEPARTMENT
 ENGINEERING DIVISION
 UNSIGNALIZED INTERSECTIONS SAFETY
 IMPROVEMENT PROJECT PS028

CONSTRUCTION NOTES (FOR THIS SHEET)

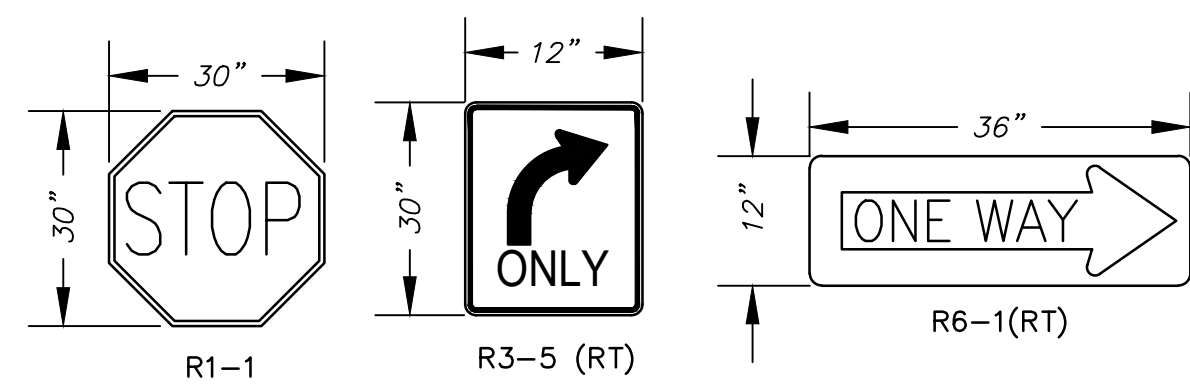
- ① CONTRACTOR TO INSTALL THERMOPLASTIC "CONTINENTAL" STYLE CROSSWALK 10' WIDTH FROM INSIDE TO INSIDE OF 12" SOLID YELLOW THERMOPLASTIC STRIPE PER CALTRANS STD PLAN A24F OR AS DIRECTED BY THE ENGINEER. ALL CROSSWALK MARKINGS SHALL BE THERMOPLASTIC AND APPLIED PER THE SPECIAL PROVISIONS.
- ② CONTRACTOR TO INSTALL THERMOPLASTIC 12" WHITE RETROREFLECTIVE LIMIT LINE PER CALTRANS STD. PLAN A24E OR AS DIRECTED BY THE ENGINEER.
- ③ CONTRACTOR TO INSTALL THERMOPLASTIC 4" DOUBLE YELLOW RETROREFLECTIVE CENTERLINE PER CALTRANS STD. PLAN A20A, DETAIL 22, OR AS DIRECTED BY THE ENGINEER.
- ④ FURNISH AND INSTALL SIGN (AS NOTED) ON SINGLE POST PER CALTRANS STD PLAN RS4.
- ⑤ CONTRACTOR TO INSTALL THERMOPLASTIC WHITE RETROREFLECTIVE "STOP" MARKINGS PER CALTRANS STD. PLAN A24D OR AS DIRECTED BY THE ENGINEER.
- ⑥ CONTRACTOR TO INSTALL THERMOPLASTIC WHITE RETROREFLECTIVE "TYPE IV (R) ARROW" MARKINGS PER CALTRANS STD. PLAN A24A OR AS DIRECTED BY THE ENGINEER.
- ⑦ CONTRACTOR TO INSTALL THERMOPLASTIC WHITE RETROREFLECTIVE "KEEP CLEAR" MARKINGS PER CALTRANS STD. PLAN A24E OR AS DIRECTED BY THE ENGINEER.
- ⑧ CONTRACTOR TO INSTALL THERMOPLASTIC 8" WHITE RETROREFLECTIVE CHANNELIZING LINE PER CALTRANS STD. PLAN A20D, DETAIL 38B, OR AS DIRECTED BY THE ENGINEER.
- ⑨ CONTRACTOR TO INSTALL THERMOPLASTIC 8" WHITE RETROREFLECTIVE LANELINE PER CALTRANS STD. PLAN A20A, DETAIL 12, OR AS DIRECTED BY THE ENGINEER.
- ⑩ CONTRACTOR TO PAINT RED CURB.

LEGEND:

- ⊥ EXISTING SIGN
- ⊥ PROPOSED SIGN
- [E] EXISTING TO REMAIN
- (RL) RELOCATE EXISTING SIGN AND POSTS, AS NOTED.
- (RP) REMOVE EXISTING STRIPING AND/OR PAVEMENT MARKINGS (SANDBLAST METHOD). ALL CONFLICTING STRIPING AND MARKINGS SHALL BE REMOVED.
- (RS) REMOVE AND SALVAGE SIGN AND POSTS, AS NOTED.
- (PP) PROTECT IN PLACE EXISTING RED CURB



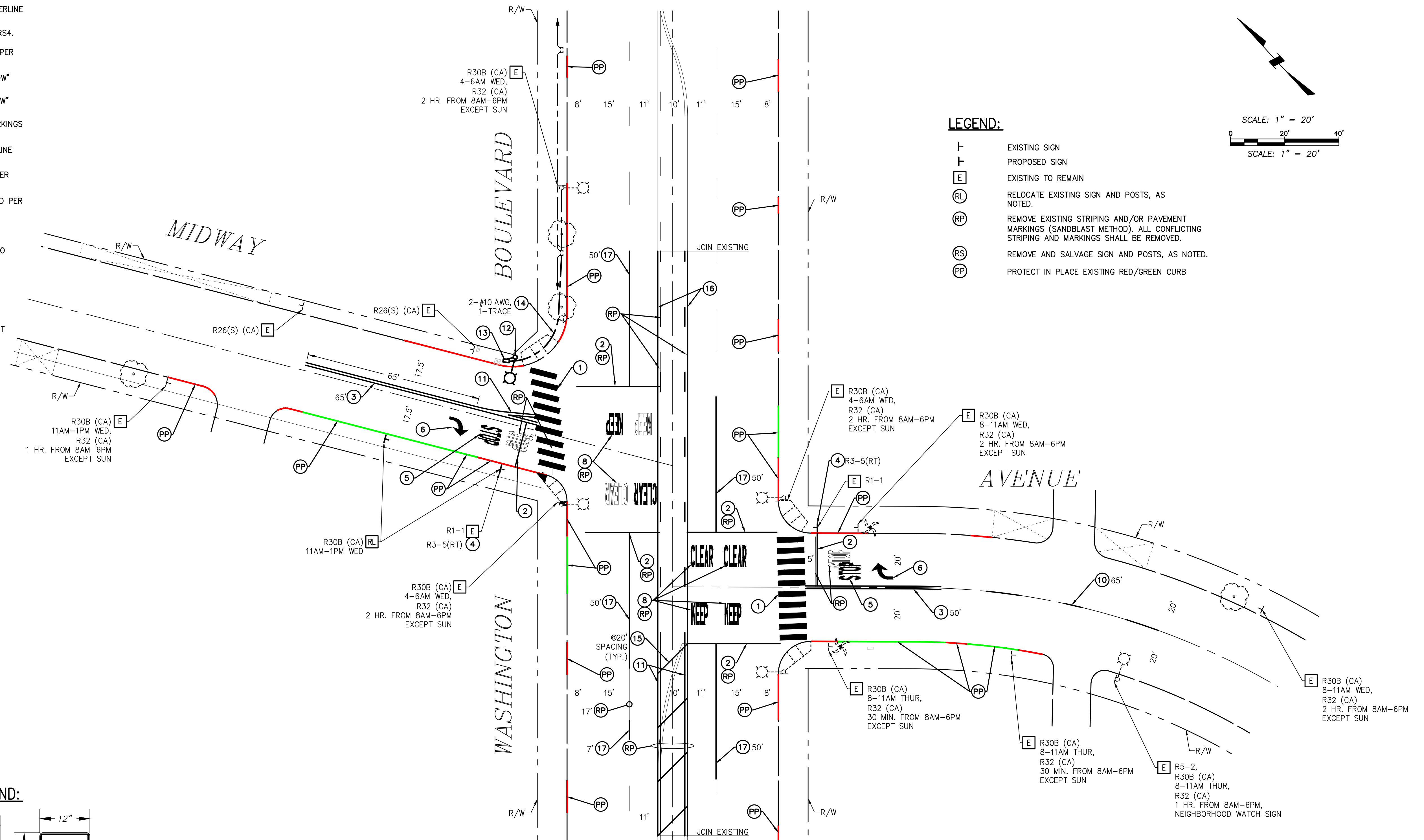
SIGN LEGEND:



CITY OF CULVER CITY
 PUBLIC WORKS DEPARTMENT
 ENGINEERING DIVISION
 UNSIGNALIZED INTERSECTIONS SAFETY
 IMPROVEMENT PROJECT PS028

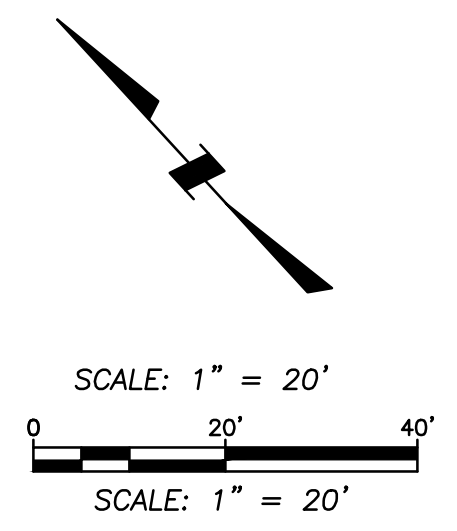
CONSTRUCTION NOTES (FOR THIS SHEET)

- 1 CONTRACTOR TO INSTALL THERMOPLASTIC "CONTINENTAL" STYLE CROSSWALK 10' WIDTH FROM INSIDE TO INSIDE OF 12" SOLID YELLOW THERMOPLASTIC STRIPE PER CALTRANS STD PLAN A24F OR AS DIRECTED BY THE ENGINEER. ALL CROSSWALK MARKINGS SHALL BE THERMOPLASTIC AND APPLIED PER THE SPECIAL PROVISIONS.
- 2 CONTRACTOR TO INSTALL THERMOPLASTIC 12" WHITE RETROREFLECTIVE LIMIT LINE PER CALTRANS STD. PLAN A24E OR AS DIRECTED BY THE ENGINEER.
- 3 CONTRACTOR TO INSTALL THERMOPLASTIC 4" DOUBLE YELLOW RETROREFLECTIVE CENTERLINE PER CALTRANS STD. PLAN A20A, DETAIL 22, OR AS DIRECTED BY THE ENGINEER.
- 4 FURNISH AND INSTALL SIGN (AS NOTED) ON SINGLE POST PER CALTRANS STD PLAN RS4.
- 5 CONTRACTOR TO INSTALL THERMOPLASTIC WHITE RETROREFLECTIVE "STOP" MARKINGS PER CALTRANS STD. PLAN A24D OR AS DIRECTED BY THE ENGINEER.
- 6 CONTRACTOR TO INSTALL THERMOPLASTIC WHITE RETROREFLECTIVE "TYPE IV (R) ARROW" MARKINGS PER CALTRANS STD. PLAN A24A OR AS DIRECTED BY THE ENGINEER.
- 7 CONTRACTOR TO INSTALL THERMOPLASTIC WHITE RETROREFLECTIVE "TYPE IV (L) ARROW" MARKINGS PER CALTRANS STD. PLAN A24A OR AS DIRECTED BY THE ENGINEER.
- 8 CONTRACTOR TO INSTALL THERMOPLASTIC WHITE RETROREFLECTIVE "KEEP CLEAR" MARKINGS PER CALTRANS STD. PLAN A24E OR AS DIRECTED BY THE ENGINEER.
- 9 CONTRACTOR TO INSTALL THERMOPLASTIC 8" WHITE RETROREFLECTIVE CHANNELIZING LINE PER CALTRANS STD. PLAN A20D, DETAIL 38B, OR AS DIRECTED BY THE ENGINEER.
- 10 CONTRACTOR TO INSTALL THERMOPLASTIC 4" YELLOW RETROREFLECTIVE CENTERLINE PER CALTRANS STD. PLAN A20A, DETAIL 2, OR AS DIRECTED BY THE ENGINEER.
- 11 CONTRACTOR TO INSTALL THERMOPLASTIC 4" YELLOW RETROREFLECTIVE MEDIAN ISLAND PER CALTRANS STD. PLAN A20B, DETAIL 29, OR AS DIRECTED BY THE ENGINEER.
- 12 FURNISH AND INSTALL STREET LIGHTING, POLE, LUMINAIRE MAST ARM, AND LUMINAIRE (XX WATT). CONSTRUCT FOUNDATION. (SEE COORDINATION-TBD)
- 13 FURNISH AND INSTALL NEW NO. 5 PULL BOX. RECONSTRUCT SIDEWALK OR SURFACE TO MATCH EXISTING.
- 14 INSTALL 2" SCHEDULE 80PVC CONDUIT WITH CONDUCTORS, AS SHOWN.
- 15 CONTRACTOR TO INSTALL THERMOPLASTIC 12" WHITE RETROREFLECTIVE DIAGONAL (AT SPACING SHOWN) PER MUTCD SECTION 3B.24 OR AS DIRECTED BY THE ENGINEER.
- 16 CONTRACTOR TO INSTALL THERMOPLASTIC 4" YELLOW RETROREFLECTIVE TWO-WAY LEFT TURN LANE PER CALTRANS STD. PLAN A20B, DETAIL 32 OR AS DIRECTED BY THE ENGINEER.
- 17 CONTRACTOR TO INSTALL THERMOPLASTIC 4" WHITE RETROREFLECTIVE LANE LINE PER MUTCD SECTION 3B.24 OR AS DIRECTED BY THE ENGINEER.

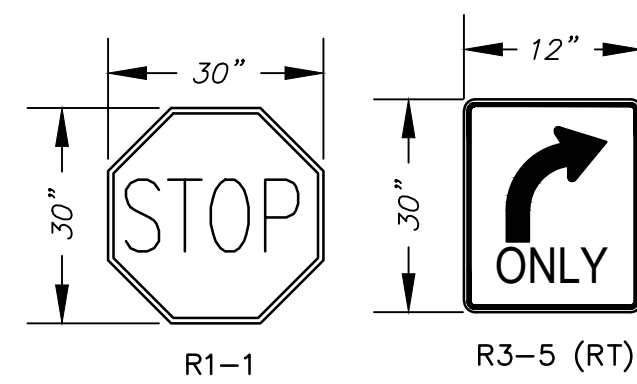


LEGEND:

- EXISTING SIGN
- PROPOSED SIGN
- E EXISTING TO REMAIN
- RL RELOCATE EXISTING SIGN AND POSTS, AS NOTED.
- RP REMOVE EXISTING STRIPING AND/OR PAVEMENT MARKINGS (SANDBLAST METHOD). ALL CONFLICTING STRIPING AND MARKINGS SHALL BE REMOVED.
- RS REMOVE AND SALVAGE SIGN AND POSTS, AS NOTED.
- PP PROTECT IN PLACE EXISTING RED/GREEN CURB



SIGN LEGEND:



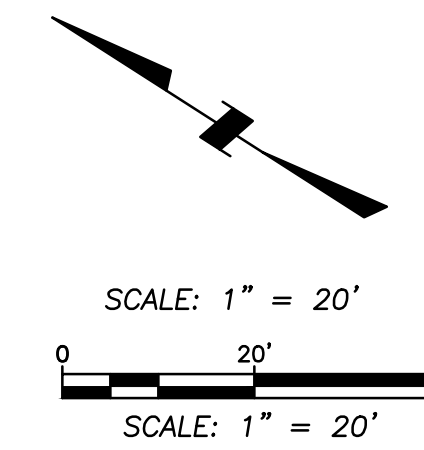
CITY OF CULVER CITY
PUBLIC WORKS DEPARTMENT
ENGINEERING DIVISION
UNSIGNALIZED INTERSECTIONS SAFETY
IMPROVEMENT PROJECT PS028

CONSTRUCTION NOTES (FOR THIS SHEET)

- ① CONTRACTOR TO INSTALL THERMOPLASTIC "CONTINENTAL" STYLE CROSSWALK 10' WIDTH FROM INSIDE TO INSIDE OF 12" SOLID YELLOW THERMOPLASTIC STRIPE PER CALTRANS STD. PLAN A24F OR AS DIRECTED BY THE ENGINEER. ALL CROSSWALK MARKINGS SHALL BE THERMOPLASTIC AND APPLIED PER THE SPECIAL PROVISIONS.
- ② CONTRACTOR TO INSTALL THERMOPLASTIC 12" WHITE RETROREFLECTIVE LIMIT LINE PER CALTRANS STD. PLAN A24E OR AS DIRECTED BY THE ENGINEER.
- ③ CONTRACTOR TO INSTALL THERMOPLASTIC 6" DOUBLE YELLOW RETROREFLECTIVE CENTERLINE PER CALTRANS STD. PLAN A20A, DETAIL 22, OR AS DIRECTED BY THE ENGINEER.
- ④ CONTRACTOR TO INSTALL THERMOPLASTIC WHITE RETROREFLECTIVE "STOP" MARKINGS PER CALTRANS STD. PLAN A24D OR AS DIRECTED BY THE ENGINEER.
- ⑤ CONTRACTOR TO INSTALL THERMOPLASTIC 4" WHITE RETROREFLECTIVE RIGHT EDGELINE PER CALTRANS STD. PLAN A20B, DETAIL 27B, OR AS DIRECTED BY THE ENGINEER.
- ⑥ CONTRACTOR TO INSTALL THERMOPLASTIC 6" YELLOW RETROREFLECTIVE CENTERLINE PER CALTRANS STD. PLAN A20A, DETAIL 2, OR AS DIRECTED BY THE ENGINEER.
- ⑦ CONTRACTOR TO INSTALL THERMOPLASTIC 6" WHITE RETROREFLECTIVE BICYCLE LANE STRIPING PER CALTRANS STD. PLAN A20D, DETAIL 39, OR AS DIRECTED BY THE ENGINEER.
- ⑧ CONTRACTOR TO INSTALL THERMOPLASTIC 6" WHITE RETROREFLECTIVE DASHED BICYCLE LANE STRIPING PER CALTRANS STD. PLAN A20D, DETAIL 39A, OR AS DIRECTED BY THE ENGINEER.
- ⑨ CONTRACTOR TO INSTALL THERMOPLASTIC WHITE RETROREFLECTIVE "BIKE LANE" MARKINGS PER CALTRANS STD. PLAN A24A AND A24C, OR AS DIRECTED BY THE ENGINEER.
- ⑩ CONTRACTOR TO INSTALL THERMOPLASTIC 8" WHITE RETROREFLECTIVE CHANNELIZING LINE PER CALTRANS STD. PLAN A20D, DETAIL 38B, OR AS DIRECTED BY THE ENGINEER.
- ⑪ CONTRACTOR TO PAINT RED CURB.

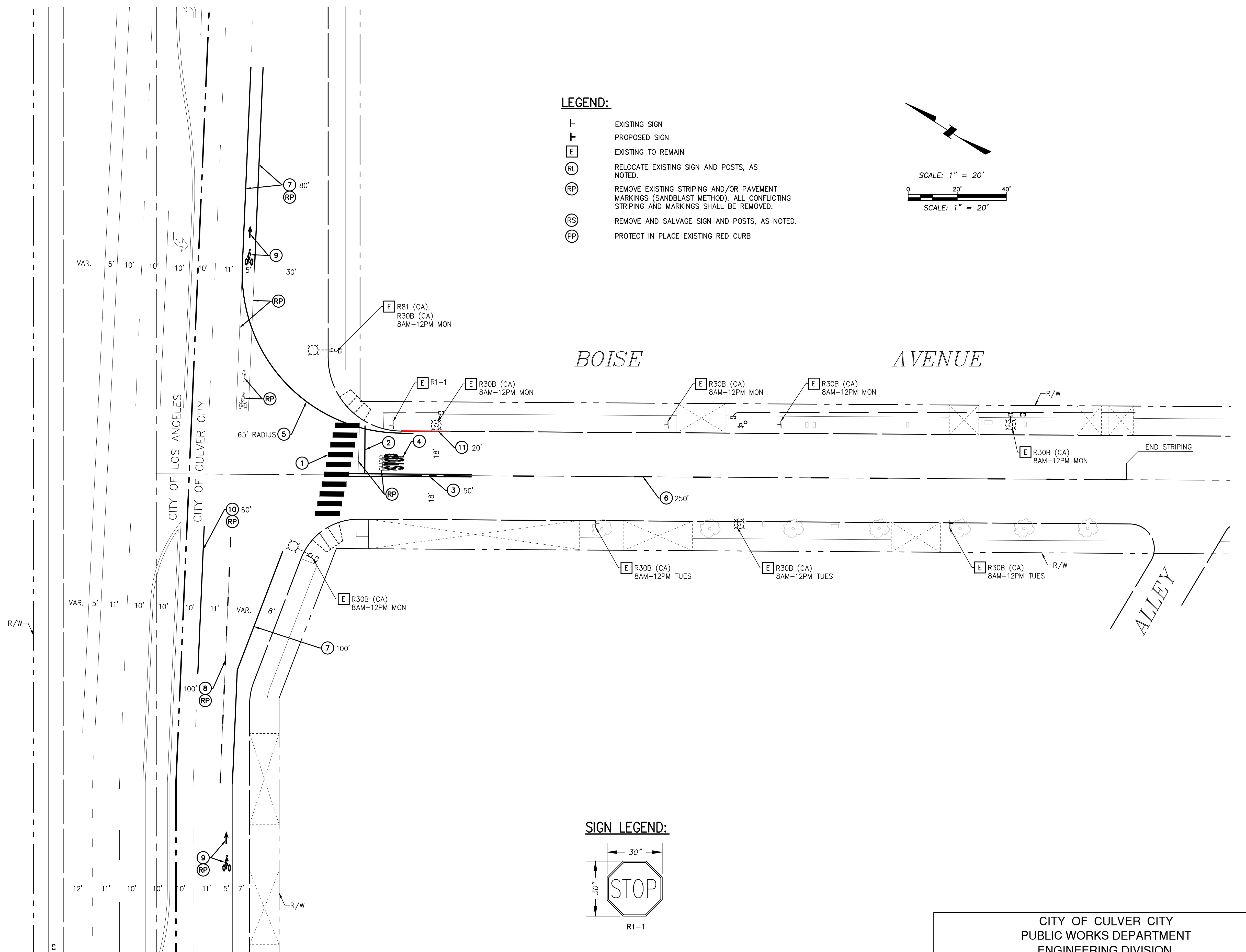
LEGEND:

- ⊥ EXISTING SIGN
- ⊥ PROPOSED SIGN
- ⊥ EXISTING TO REMAIN
- Ⓡ RELOCATE EXISTING SIGN AND POSTS, AS NOTED.
- Ⓡ REMOVE EXISTING STRIPING AND/OR PAVEMENT MARKINGS (SANDBLAST METHOD). ALL CONFLICTING STRIPING AND MARKINGS SHALL BE REMOVED.
- Ⓡ REMOVE AND SALVAGE SIGN AND POSTS, AS NOTED.
- Ⓡ PROTECT IN PLACE EXISTING RED CURB

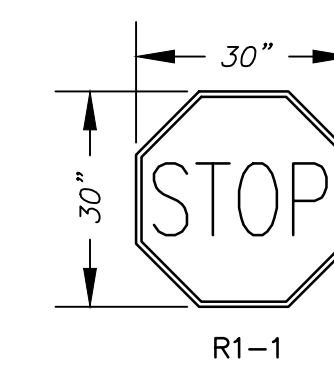


WASHINGTON PLACE

WASHINGTON PLACE



SIGN LEGEND:



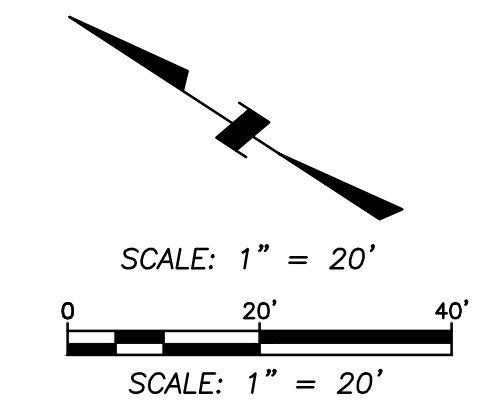
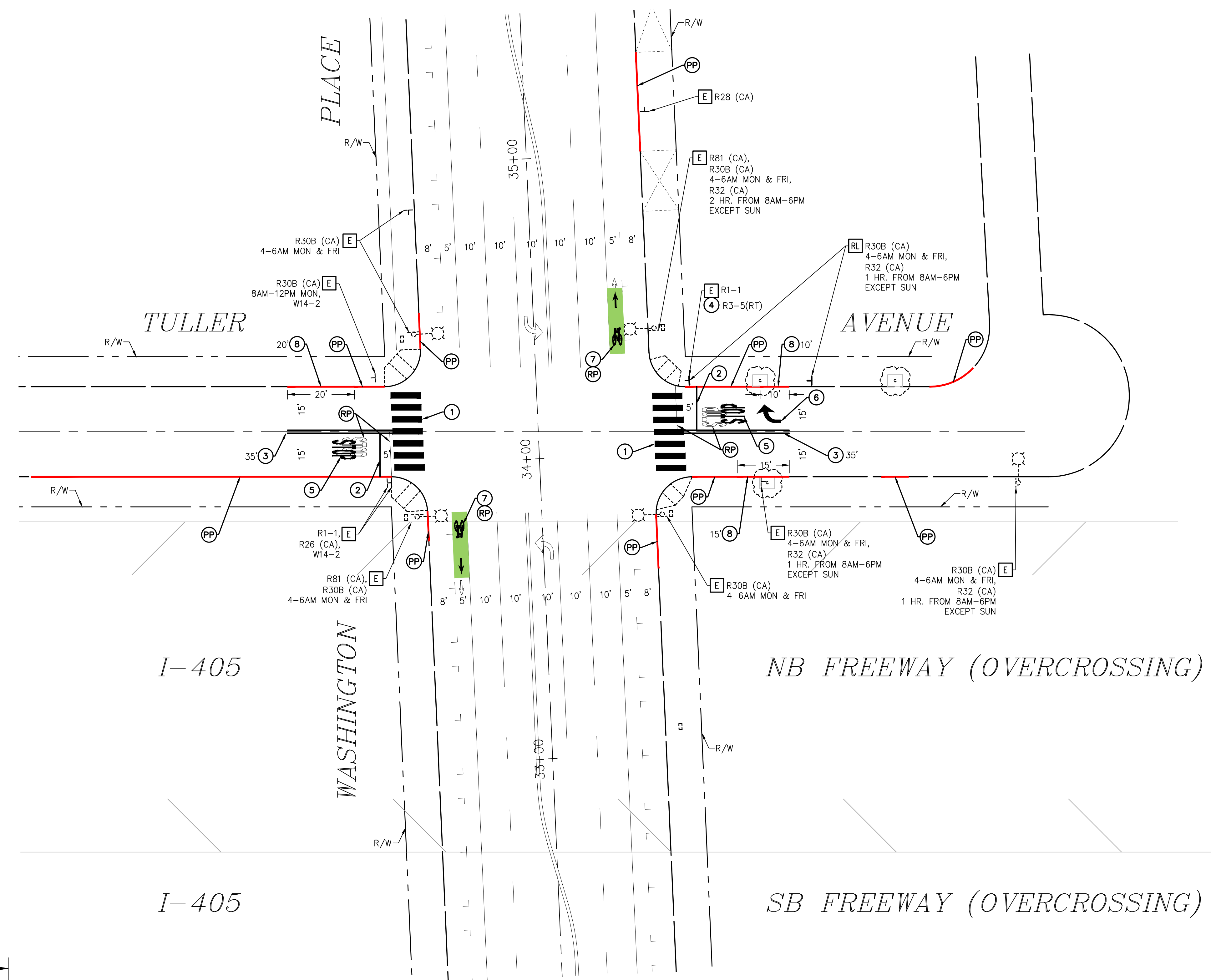
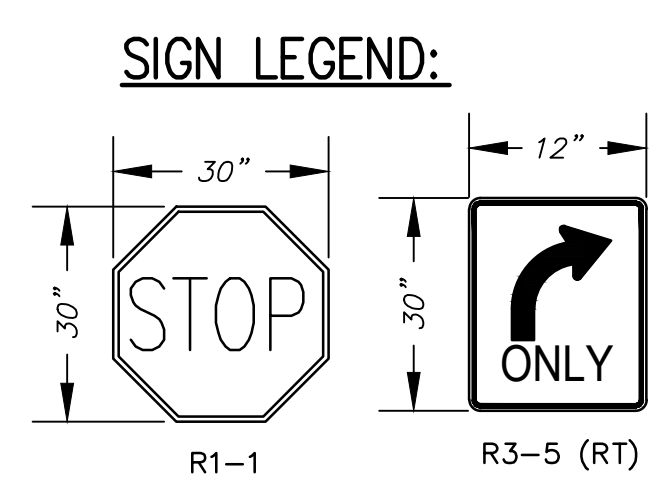
CITY OF CULVER CITY
PUBLIC WORKS DEPARTMENT
ENGINEERING DIVISION
UNSIGNALIZED INTERSECTIONS SAFETY
IMPROVEMENT PROJECT PS028

CONSTRUCTION NOTES (FOR THIS SHEET)

- ① CONTRACTOR TO INSTALL THERMOPLASTIC "CONTINENTAL" STYLE CROSSWALK 10' WIDTH FROM INSIDE TO INSIDE OF 12" SOLID YELLOW THERMOPLASTIC STRIPE PER CALTRANS STD PLAN A24F OR AS DIRECTED BY THE ENGINEER. ALL CROSSWALK MARKINGS SHALL BE THERMOPLASTIC AND APPLIED PER THE SPECIAL PROVISIONS.
- ② CONTRACTOR TO INSTALL THERMOPLASTIC 12" WHITE RETROREFLECTIVE LIMIT LINE PER CALTRANS STD. PLAN A24E OR AS DIRECTED BY THE ENGINEER.
- ③ CONTRACTOR TO INSTALL THERMOPLASTIC 4" DOUBLE YELLOW RETROREFLECTIVE CENTERLINE PER CALTRANS STD. PLAN A20A, DETAIL 22, OR AS DIRECTED BY THE ENGINEER.
- ④ FURNISH AND INSTALL SIGN (AS NOTED) ON SINGLE POST PER CALTRANS STD PLAN RS4.
- ⑤ CONTRACTOR TO INSTALL THERMOPLASTIC WHITE RETROREFLECTIVE "STOP" MARKINGS PER CALTRANS STD. PLAN A24D OR AS DIRECTED BY THE ENGINEER.
- ⑥ CONTRACTOR TO INSTALL THERMOPLASTIC WHITE RETROREFLECTIVE "TYPE IV (R) ARROW" MARKINGS PER CALTRANS STD. PLAN A24A OR AS DIRECTED BY THE ENGINEER.
- ⑦ CONTRACTOR TO INSTALL GREEN BIKE LANE MARKINGS USING MMAT MATERIAL PER CITY OF CULVER CITY SPECIFICATIONS.
- ⑧ CONTRACTOR TO PAINT RED CURB.

LEGEND:

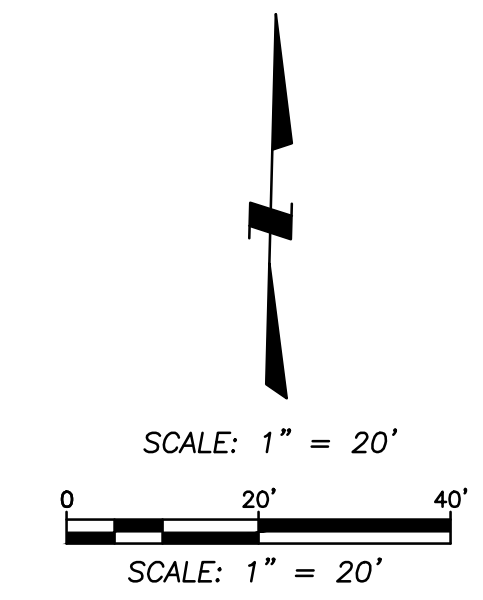
- EXISTING SIGN
- PROPOSED SIGN
- [E] EXISTING TO REMAIN
- [RL] RELOCATE EXISTING SIGN AND POSTS, AS NOTED.
- [RP] REMOVE EXISTING STRIPING AND/OR PAVEMENT MARKINGS (SANDBLAST METHOD). ALL CONFLICTING STRIPING AND MARKINGS SHALL BE REMOVED.
- [RS] REMOVE AND SALVAGE SIGN AND POSTS, AS NOTED.
- [PP] PROTECT IN PLACE EXISTING RED CURB



CITY OF CULVER CITY
 PUBLIC WORKS DEPARTMENT
 ENGINEERING DIVISION
 UNSIGNALIZED INTERSECTIONS SAFETY
 IMPROVEMENT PROJECT PS028

CONSTRUCTION NOTES (FOR THIS SHEET)

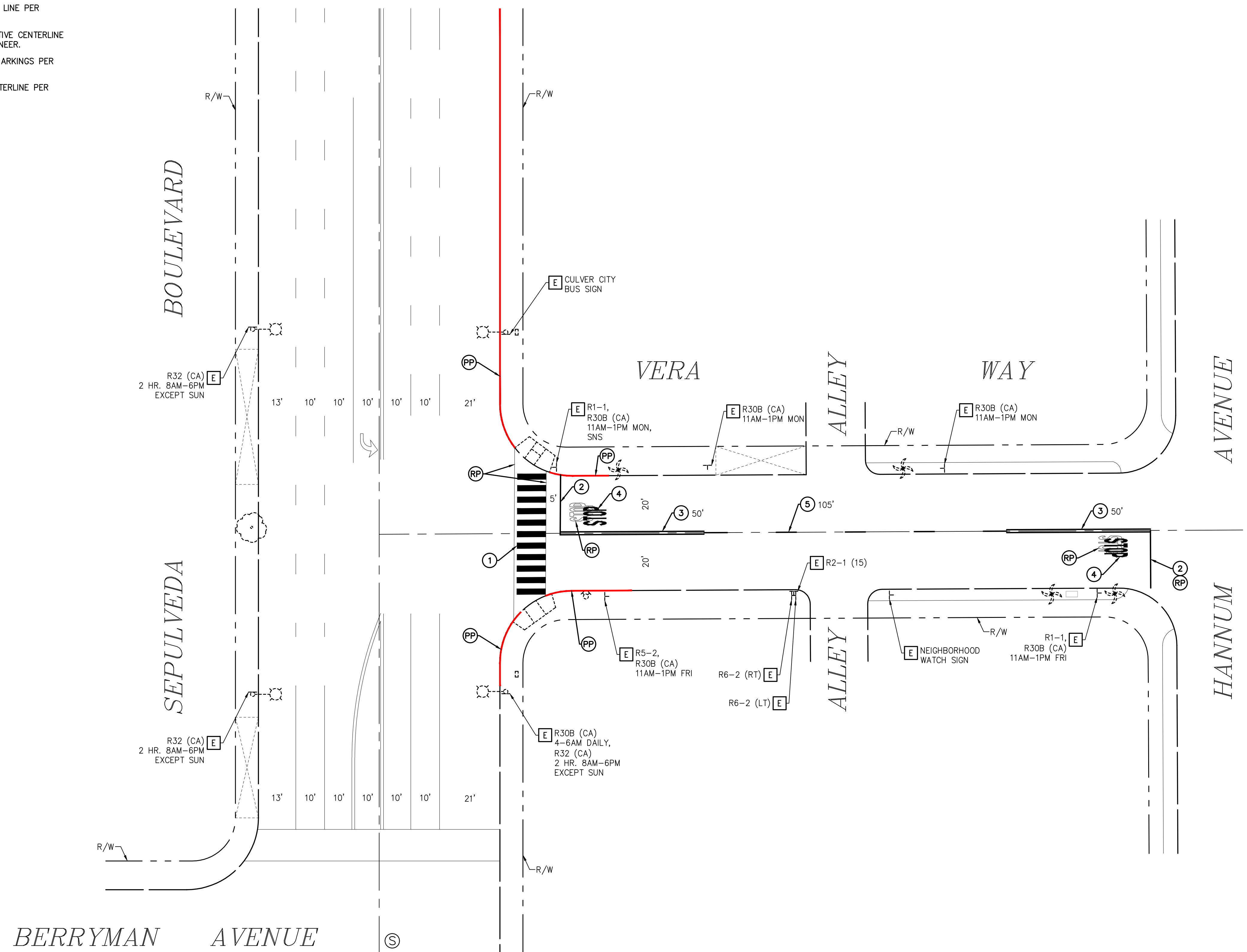
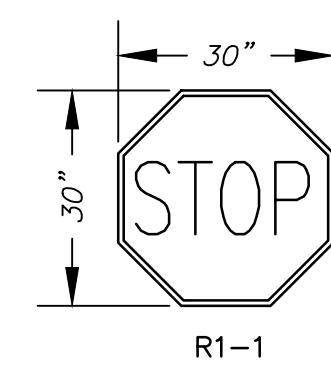
- ① CONTRACTOR TO INSTALL THERMOPLASTIC "CONTINENTAL" STYLE CROSSWALK 10' WIDTH FROM INSIDE TO INSIDE OF 12" SOLID YELLOW THERMOPLASTIC STRIPE PER CALTRANS STD. PLAN A24F OR AS DIRECTED BY THE ENGINEER. ALL CROSSWALK MARKINGS SHALL BE THERMOPLASTIC AND APPLIED PER THE SPECIAL PROVISIONS.
- ② CONTRACTOR TO INSTALL THERMOPLASTIC 12" WHITE RETROREFLECTIVE LIMIT LINE PER CALTRANS STD. PLAN A24E OR AS DIRECTED BY THE ENGINEER.
- ③ CONTRACTOR TO INSTALL THERMOPLASTIC 4" DOUBLE YELLOW RETROREFLECTIVE CENTERLINE PER CALTRANS STD. PLAN A20A, DETAIL 22, OR AS DIRECTED BY THE ENGINEER.
- ④ CONTRACTOR TO INSTALL THERMOPLASTIC WHITE RETROREFLECTIVE "STOP" MARKINGS PER CALTRANS STD. PLAN A24D OR AS DIRECTED BY THE ENGINEER.
- ⑤ CONTRACTOR TO INSTALL THERMOPLASTIC 4" YELLOW RETROREFLECTIVE CENTERLINE PER CALTRANS STD. PLAN A20A, DETAIL 2, OR AS DIRECTED BY THE ENGINEER.



LEGEND:

- Ⓢ SIGNALIZED INTERSECTION
- ⊥ EXISTING SIGN
- ⊥ PROPOSED SIGN
- ⓔ EXISTING TO REMAIN
- ⓇⓁ RELOCATE EXISTING SIGN AND POSTS, AS NOTED.
- ⓇⓅ REMOVE EXISTING STRIPING AND/OR PAVEMENT MARKINGS (SANDBLAST METHOD). ALL CONFLICTING STRIPING AND MARKINGS SHALL BE REMOVED.
- ⓇⓈ REMOVE AND SALVAGE SIGN AND POSTS, AS NOTED.
- ⓇⓅ PROTECT IN PLACE EXISTING RED CURB

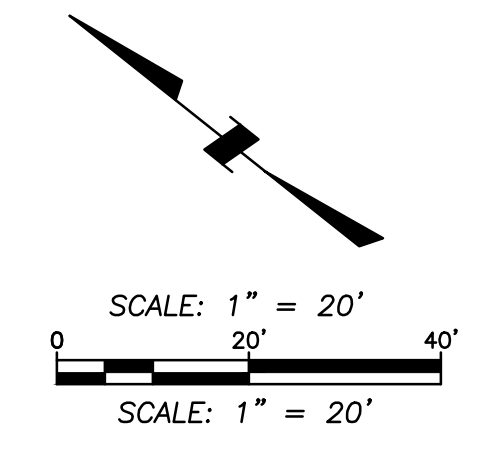
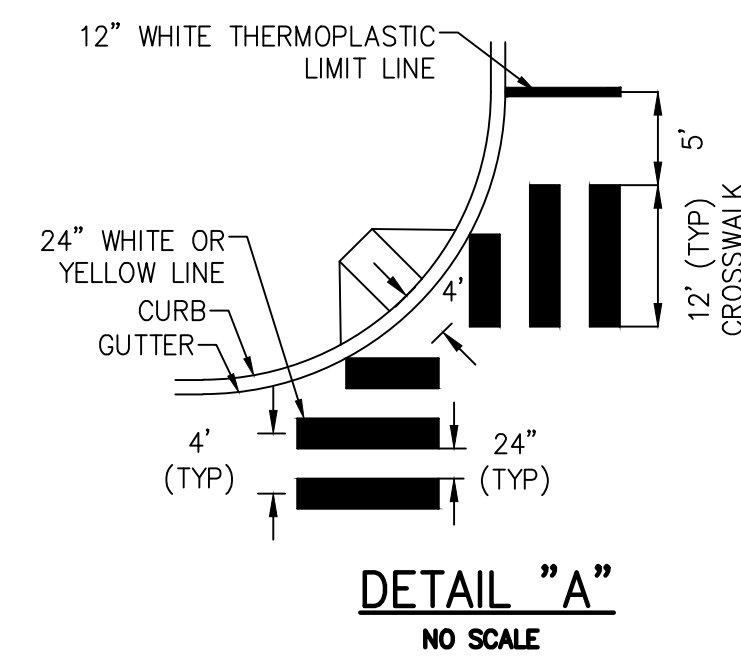
SIGN LEGEND:



CITY OF CULVER CITY
 PUBLIC WORKS DEPARTMENT
 ENGINEERING DIVISION
 UNSIGNALIZED INTERSECTIONS SAFETY
 IMPROVEMENT PROJECT PS028

CONSTRUCTION NOTES (FOR THIS SHEET)

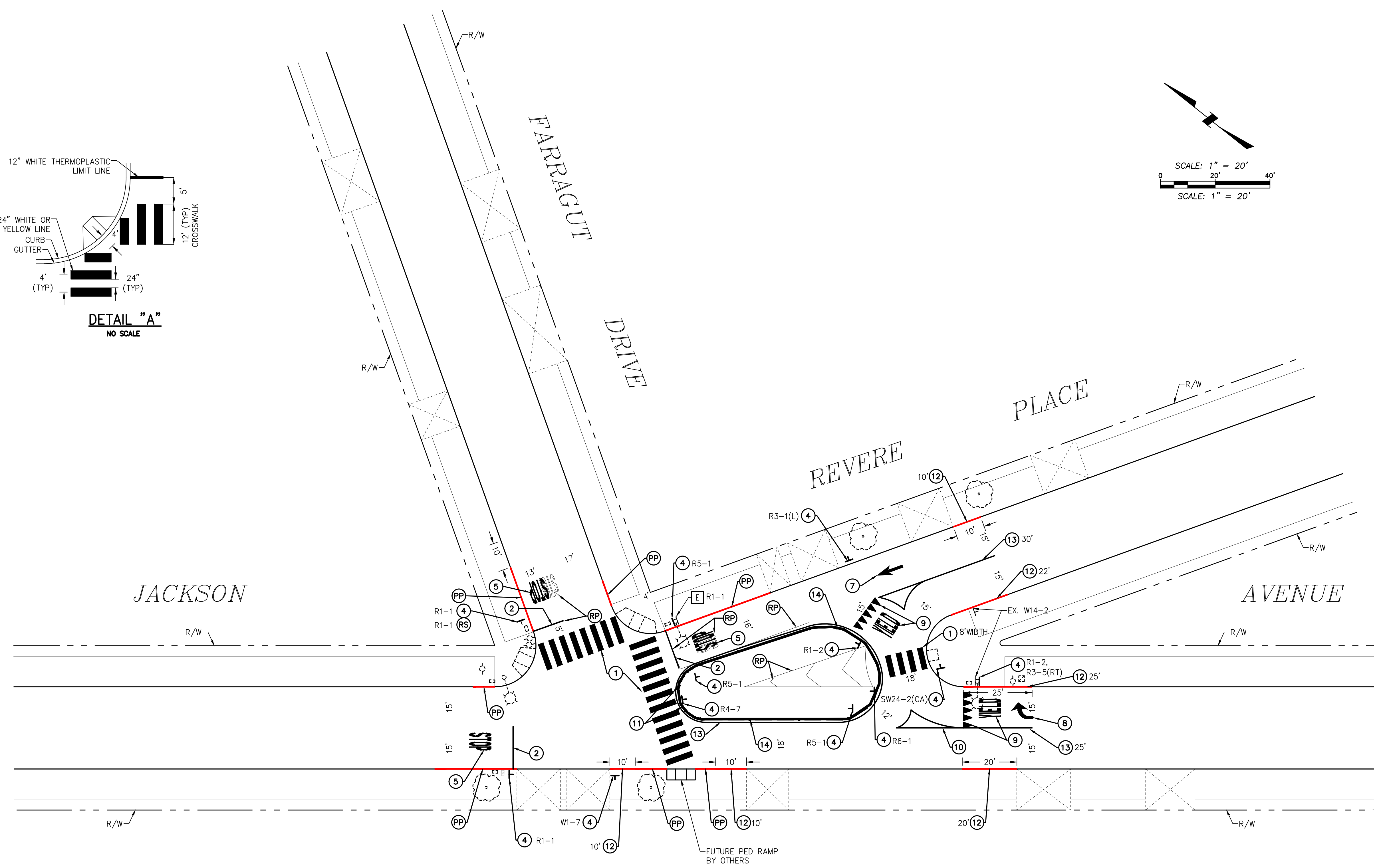
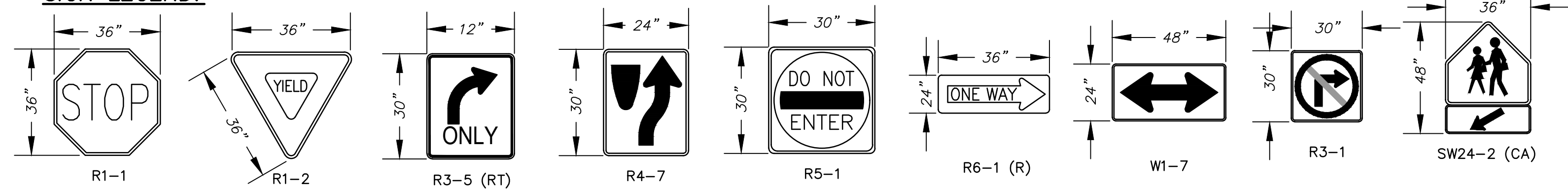
- ① CONTRACTOR TO INSTALL THERMOPLASTIC "CONTINENTAL" STYLE CROSSWALK 10' WIDTH FROM INSIDE TO INSIDE OF 12" SOLID YELLOW THERMOPLASTIC STRIPE PER DETAIL "A" HEREON. ALL CROSSWALK MARKINGS SHALL BE THERMOPLASTIC AND APPLIED PER THE SPECIAL PROVISIONS.
- ② CONTRACTOR TO INSTALL THERMOPLASTIC 12" WHITE RETROREFLECTIVE LIMIT LINE PER DETAIL "A" HEREON.
- ③ CONTRACTOR TO INSTALL THERMOPLASTIC 4" DOUBLE YELLOW RETROREFLECTIVE CENTERLINE PER CALTRANS STD. PLAN A20A, DETAIL 22, OR AS DIRECTED BY THE ENGINEER.
- ④ FURNISH AND INSTALL SIGN (AS NOTED) ON SINGLE POST PER CALTRANS STD PLAN RS4.
- ⑤ CONTRACTOR TO INSTALL THERMOPLASTIC WHITE RETROREFLECTIVE "STOP" MARKINGS PER CALTRANS STD. PLAN A24D OR AS DIRECTED BY THE ENGINEER.
- ⑥ CONTRACTOR TO INSTALL THERMOPLASTIC WHITE RETROREFLECTIVE "ONLY" MARKINGS PER CALTRANS STD. PLAN A24E OR AS DIRECTED BY THE ENGINEER.
- ⑦ CONTRACTOR TO INSTALL THERMOPLASTIC WHITE RETROREFLECTIVE "TYPE I ARROW" MARKINGS PER CALTRANS STD. PLAN A24A OR AS DIRECTED BY THE ENGINEER.
- ⑧ CONTRACTOR TO INSTALL THERMOPLASTIC WHITE RETROREFLECTIVE "TYPE VII (L) ARROW" MARKINGS PER CALTRANS STD. PLAN A24A OR AS DIRECTED BY THE ENGINEER.
- ⑨ CONTRACTOR TO INSTALL THERMOPLASTIC WHITE RETROREFLECTIVE "YIELD" MARKINGS PER CALTRANS STD. PLAN A24D AND A24E, OR AS DIRECTED BY THE ENGINEER.
- ⑩ CONTRACTOR TO INSTALL THERMOPLASTIC 4" YELLOW DASHED LANE LINE EXTENSION THROUGH INTERSECTION PER CALTRANS STD. PLAN A20D, DETAIL 40, OR AS DIRECTED BY THE ENGINEER.
- ⑪ INSTALL ENGINEERED RUBBER CURB, BRICK PAVERS AND SAND BEDDING
- ⑫ CONTRACTOR TO PAINT RED CURB.
- ⑬ CONTRACTOR TO INSTALL THERMOPLASTIC 4" - YELLOW RETROREFLECTIVE CENTERLINE.



LEGEND:

- ⊥ EXISTING SIGN
- ⊥ PROPOSED SIGN
- [E] EXISTING TO REMAIN
- (RL) RELOCATE EXISTING SIGN AND POSTS, AS NOTED.
- (RP) REMOVE EXISTING STRIPING AND/OR PAVEMENT MARKINGS (SANDBLAST METHOD). ALL CONFLICTING STRIPING AND MARKINGS SHALL BE REMOVED.
- (RS) REMOVE AND SALVAGE SIGN AND POSTS, AS NOTED.
- (PP) PROTECT IN PLACE EXISTING RED CURB

SIGN LEGEND:



CITY OF CULVER CITY
 PUBLIC WORKS DEPARTMENT
 ENGINEERING DIVISION
 UNSIGNALIZED INTERSECTIONS SAFETY
 IMPROVEMENT PROJECT PS028