

Bicycle and Pedestrian Counter Update

May 16, 2024



Introduction

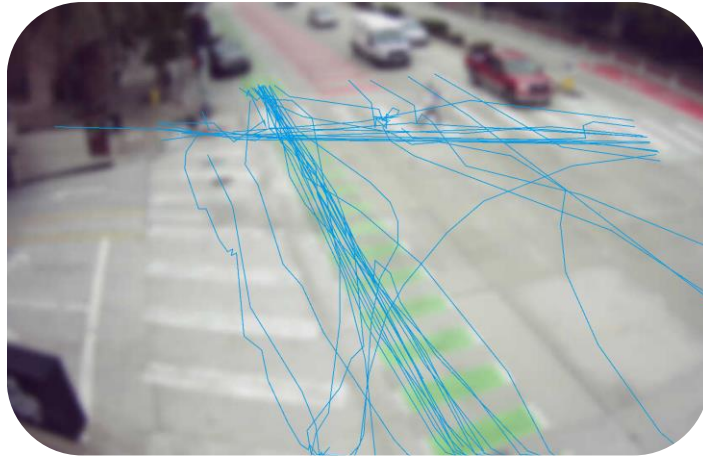
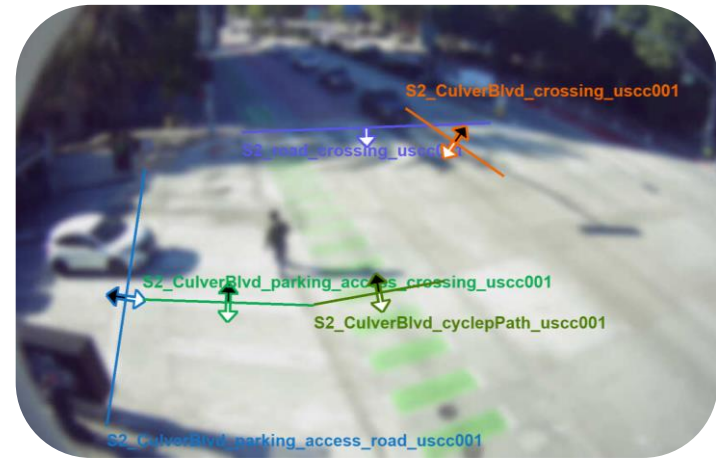
- ▶ City identified a need for automated bicycle and pedestrian counters to support the MOVE Culver City pilot project data collection effort
- ▶ Counters use AI “on the edge” to automatically count and classify vehicles, bikes, and pedestrians, 24/7
- ▶ Counters installed in 4 locations in late 2023/early 2024
 - ▶ Culver/Main
 - ▶ Washington/National
 - ▶ Washington/Cattaraugus
 - ▶ Washington/La Cienega Blvd



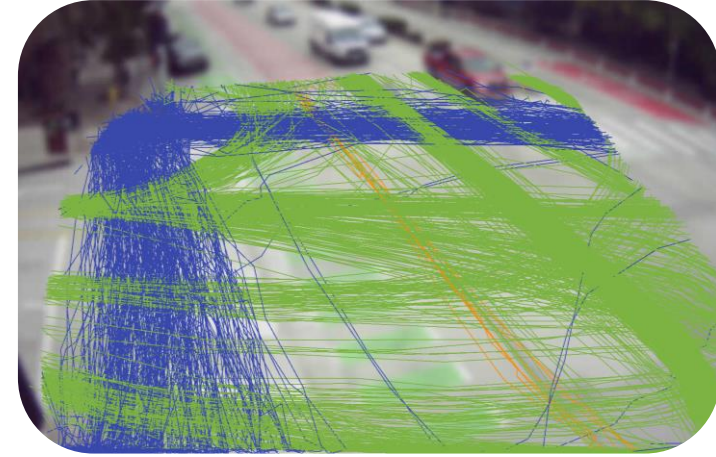
Sensor installed at Culver/Main

How it Works

- ▶ Vehicles, bicycles, and pedestrians are detected moving through the intersection
- ▶ Road users are detected moving through countlines

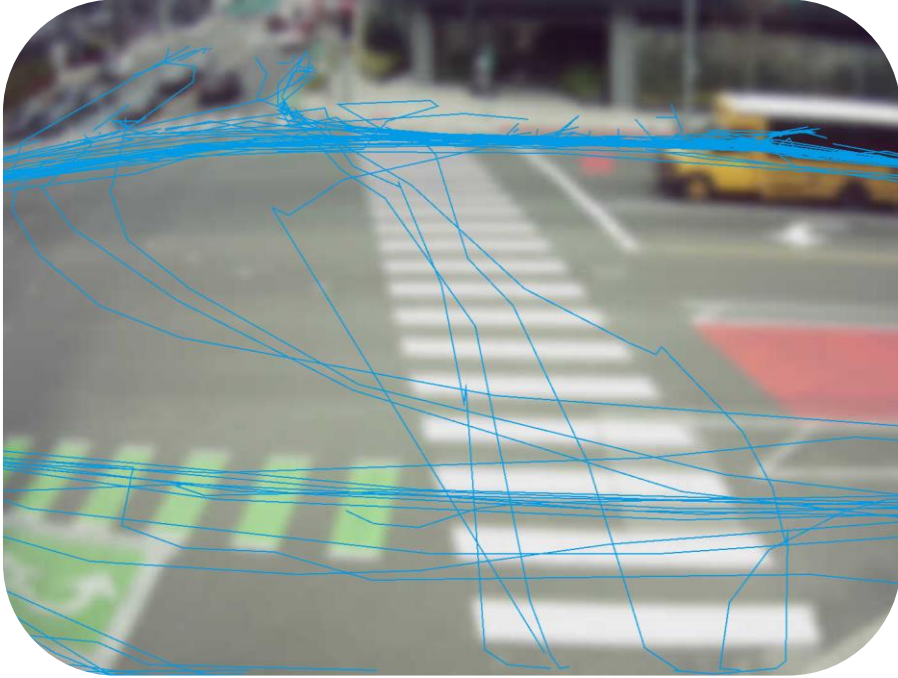


Cyclist tracks at Culver/Main
Sunday, May 5, 10 AM - noon

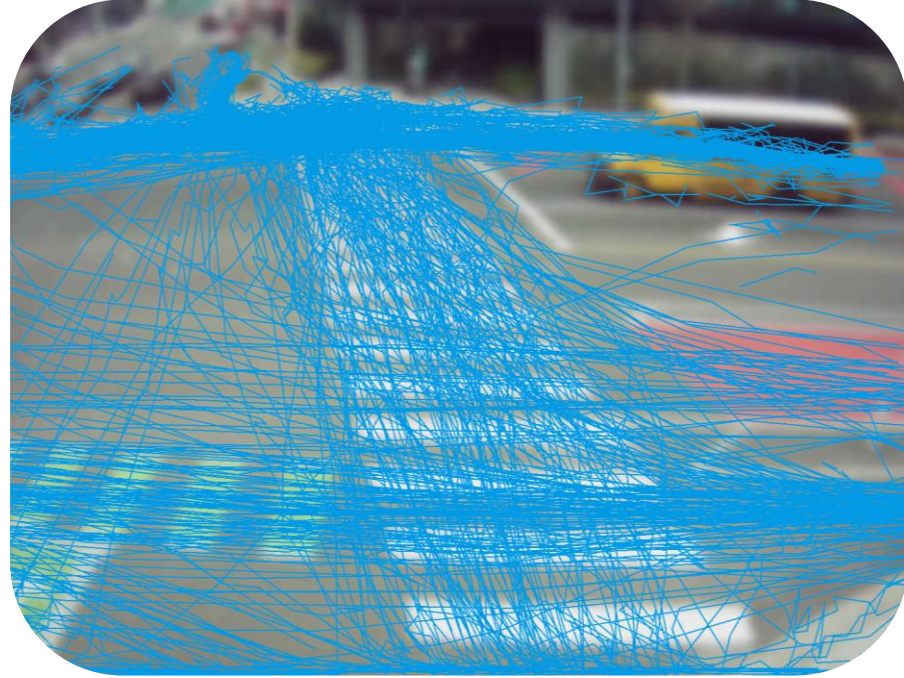


Pedestrian, Car, and bus tracks at Culver/Main
Sunday, May 5, 10 AM - noon

Special Events



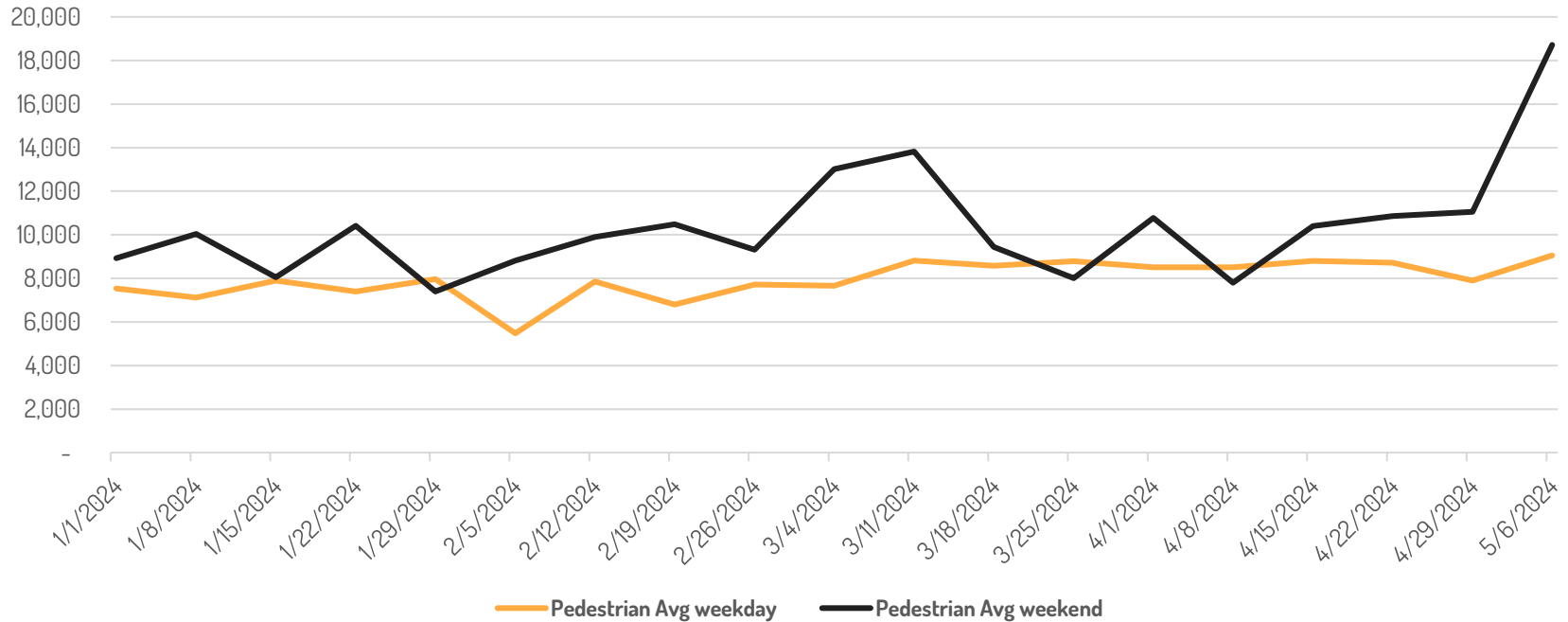
**Bike tracks at Washington/National
Sunday, April 28, noon – 2 PM
Total daily bikes: 399**



**Bike tracks at Washington/National
Sunday, April 21, noon – 2 PM
Total daily bikes: 2,634**

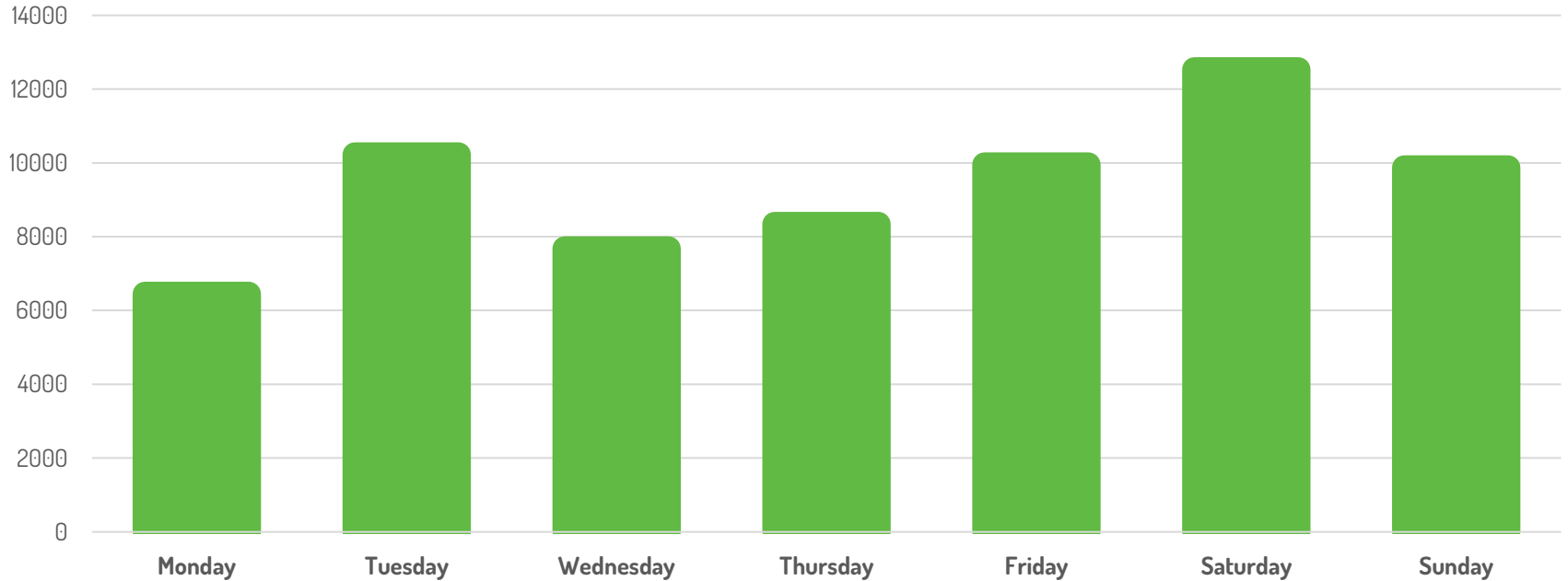
Pedestrian Data

Pedestrian Volumes, Culver/Main, January – May 2024



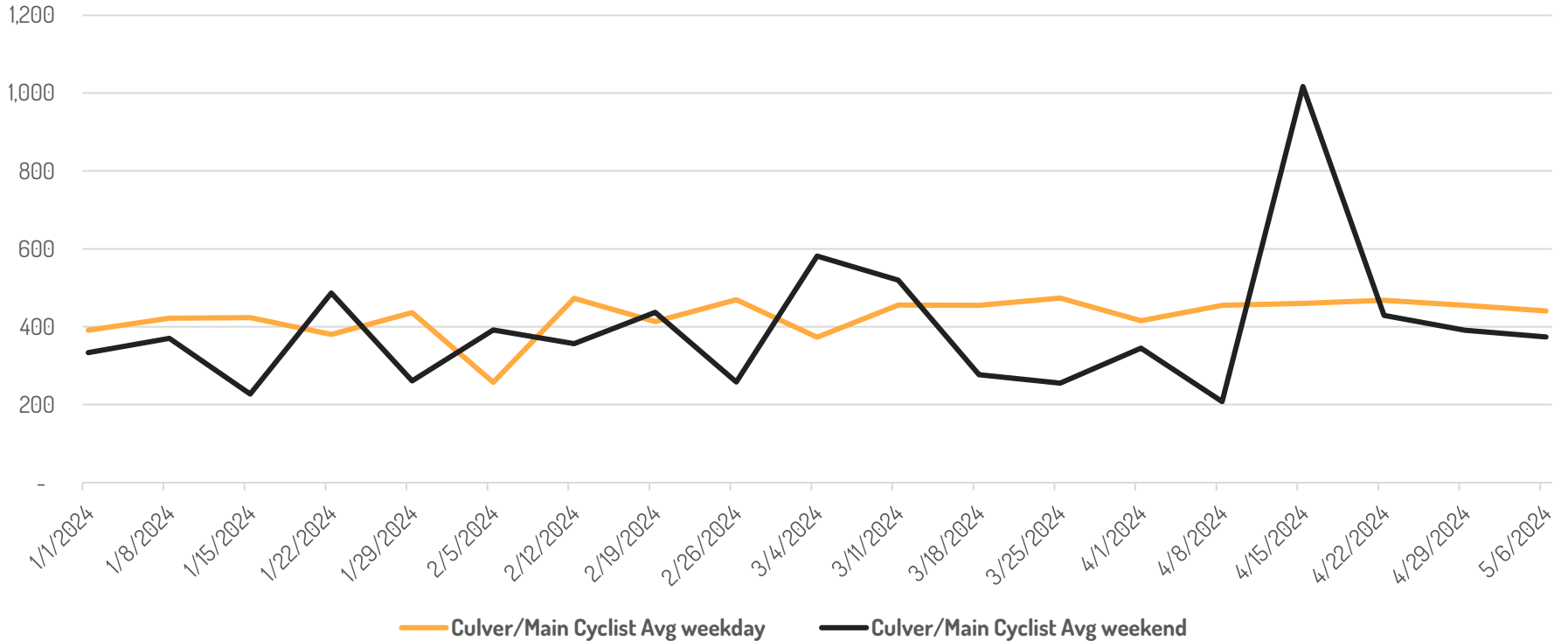
Pedestrian Data

Average Pedestrians by Day of Week, Culver/Main, March – May 2024



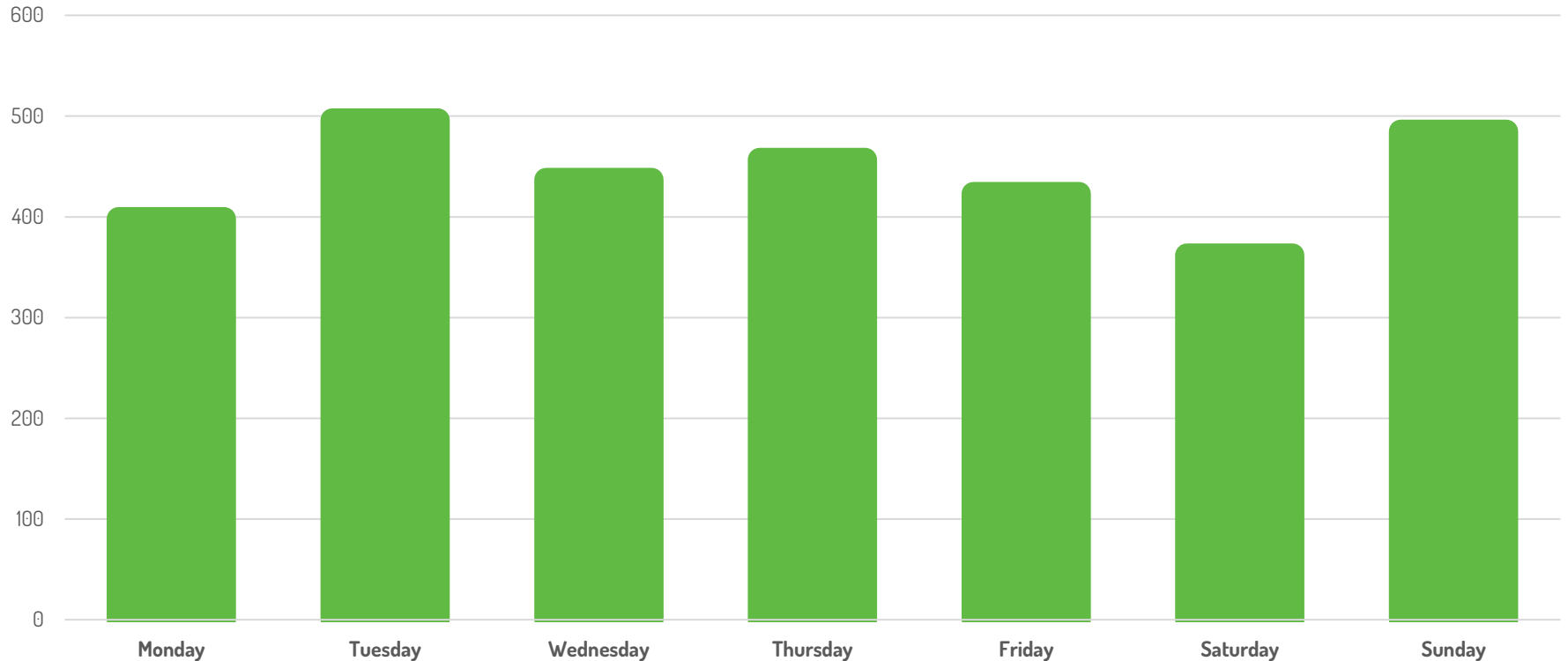
Bicycle Data

Average Bike Volumes, Culver/Main, January – May 2024



Bicycle Data

Average Bike Ridership by Day of Week, Culver/Main, March - May 2024





Thank you!



Culver CITY
Transportation Department

Mobility Planning • CityBus • CityShare • CityRide • CityFleet Services