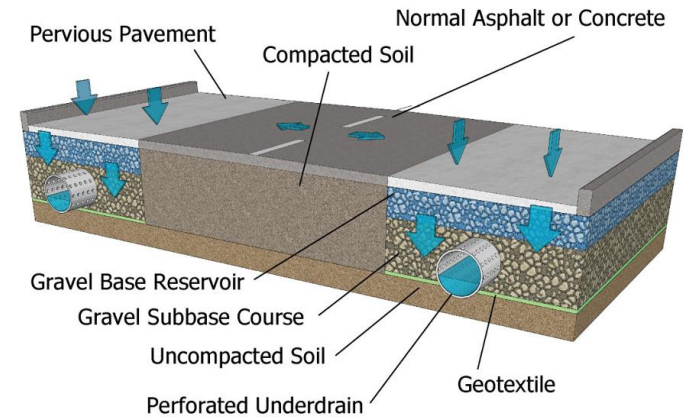
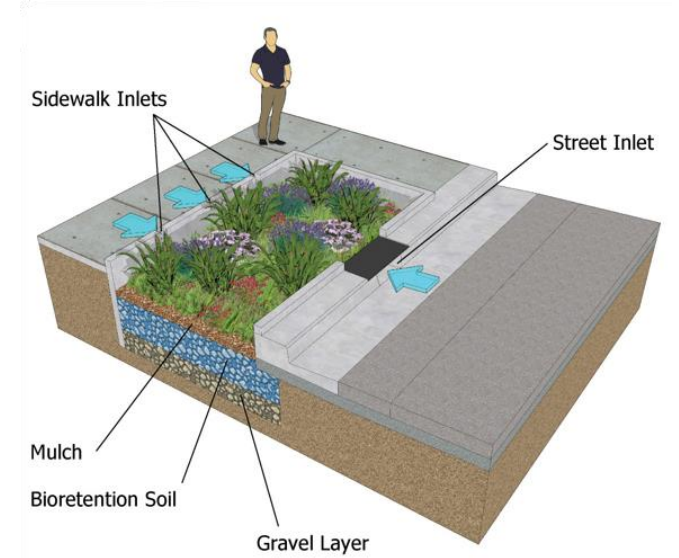
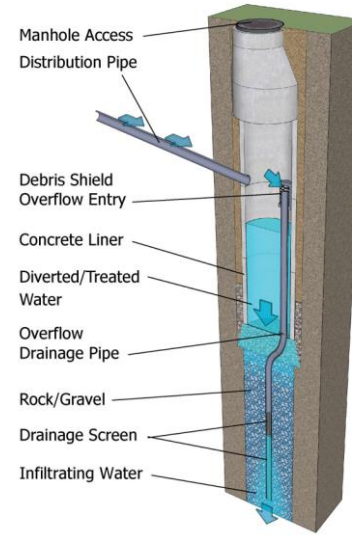


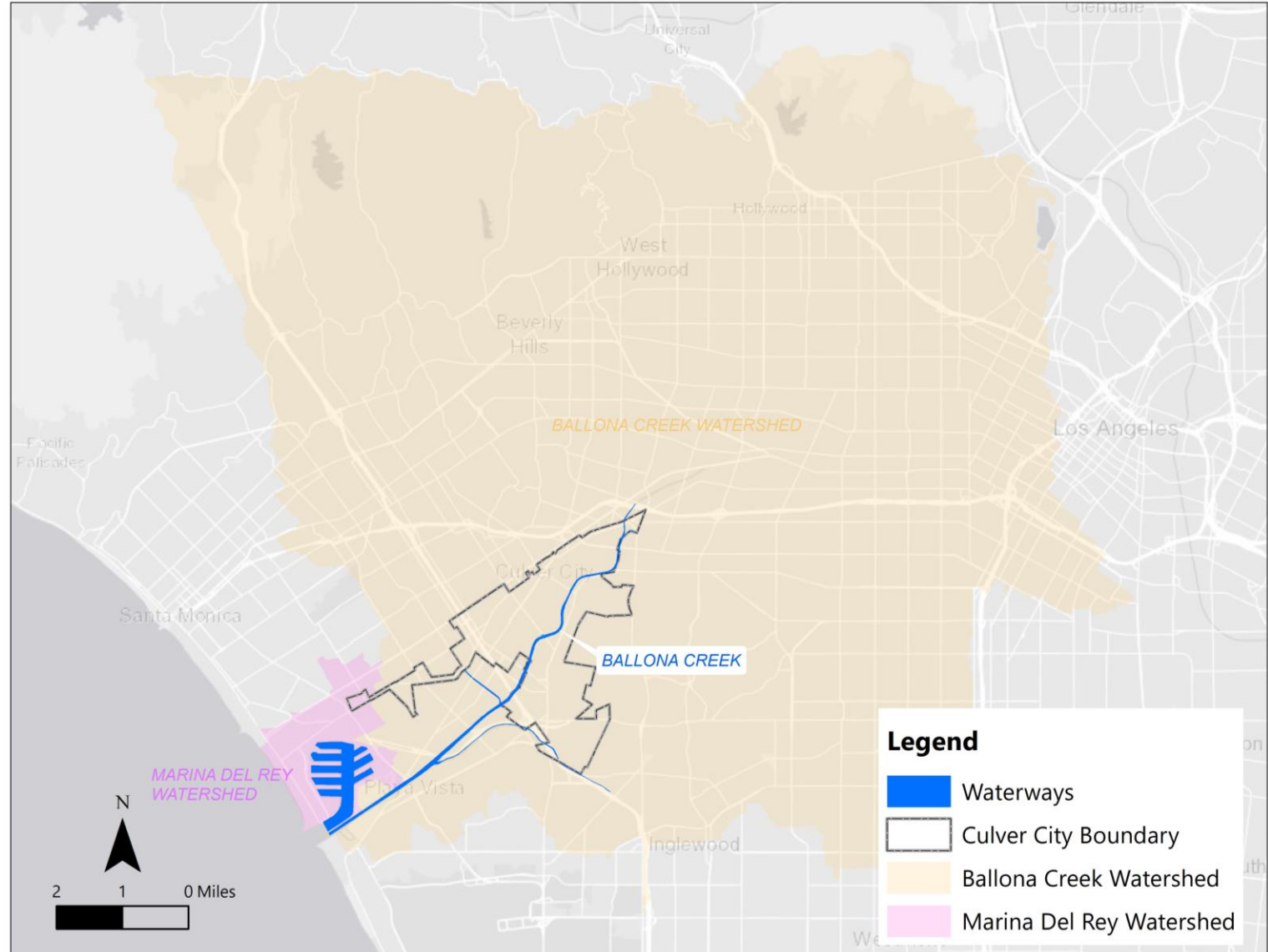
# Citywide Stormwater Capture Project - Phase I

Public Works Department  
Environmental Programs and  
Operations (EPO) Division



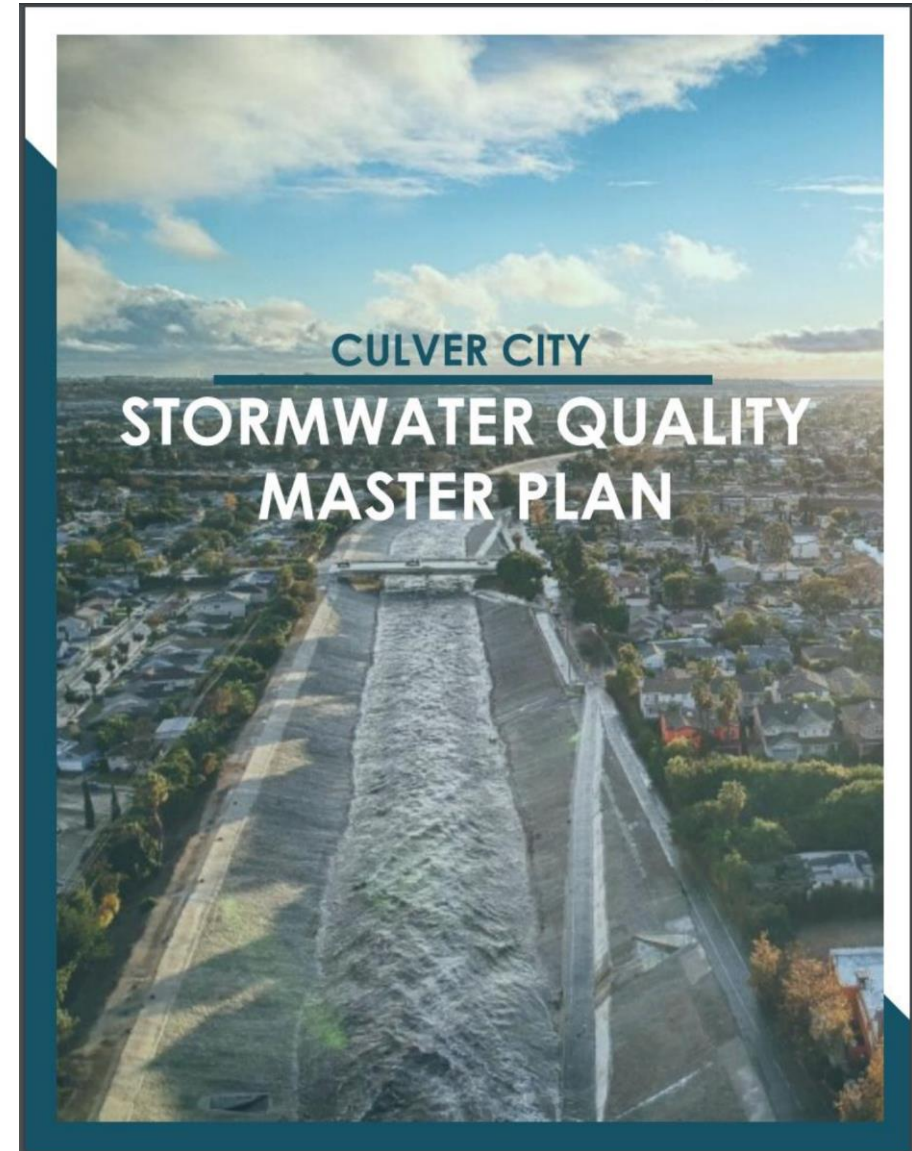
# Project Background

- Municipal Separate Storm Sewer System (MS4) Permit
  - Regulated by State & Regional Water boards to control discharge of pollutants to waterways of the United States.
- Los Angeles Regional Water Quality Control Board (RWQCB) has adopted for MS4 Permit compliance pathways:
  - Ballona Creek Enhanced Watershed Management Program (EWMP)
  - Marina del Rey EWMP



# Project Background

- 2021 Stormwater Quality Master Plan (SWQMP)
  - Developed to guide actions to help achieve compliance with water quality regulations documented under:
    - Municipal Separate Storm Sewer System (MS4) Permit
    - Ballona Creek Enhanced Watershed Management Program (EWMP)
    - Marina del Rey EWMP
    - Total Maximum Daily Load (TMDL) requirements
      - Metals - Zinc
      - Bacteria – Escherichia coli (E. Coli)



# SWQMP Project Prioritization Methodology

## Site Suitability

- Drainage area
- Site Slope
- Proximity to Storm Drain
- Imperviousness of drainage area
- Soil conditions

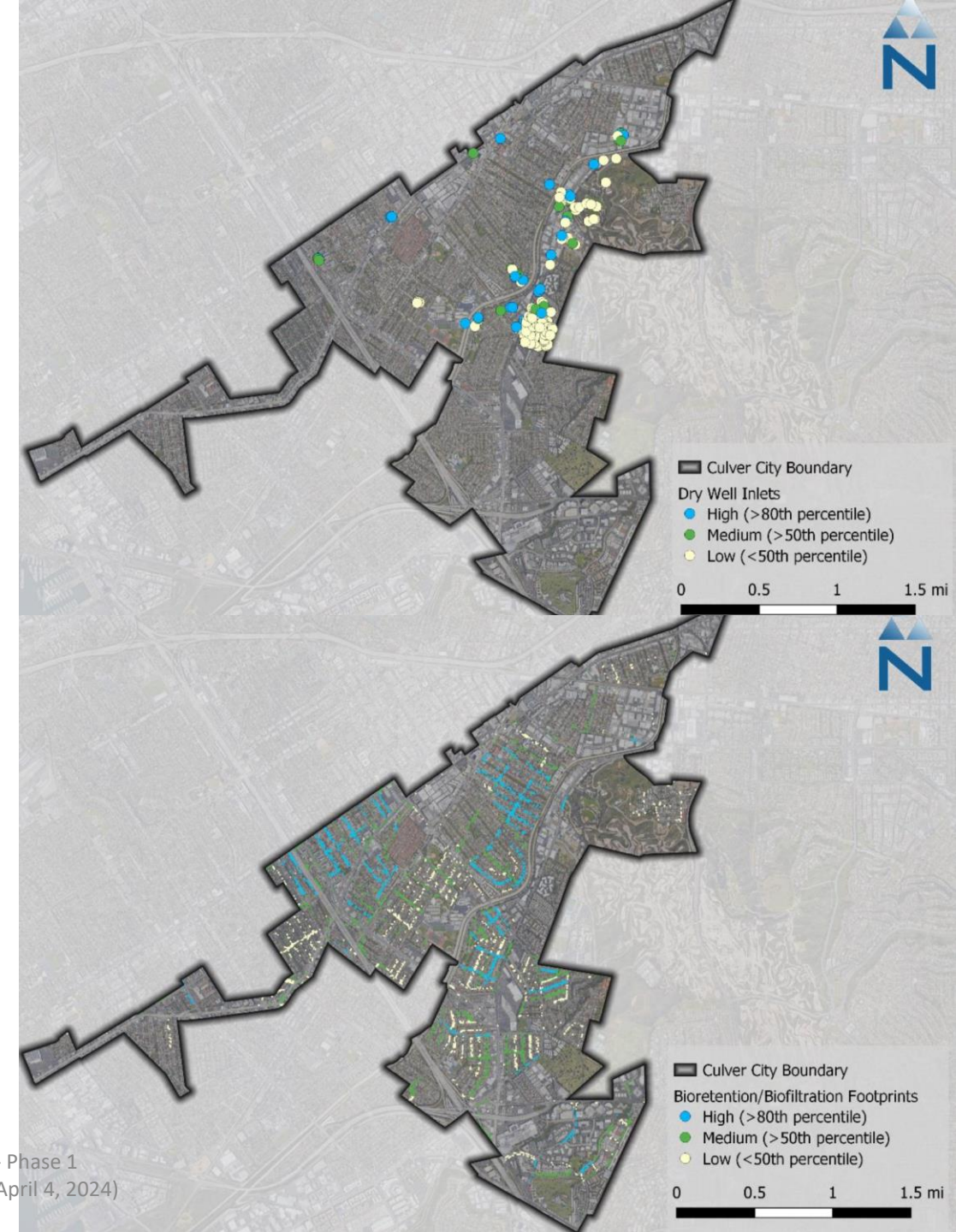
## Multi-benefit

- Pollutant Source Areas
- Proximity in Neighborhoods with Localized Flood Issues
- Proximity to Private Developments
- Groundwater table
- Urban Heat Island Index

## EWMP Equivalent Volume Capture

# SWQMP – Project Prioritization Results

- The SWQMP identified 441 project locations and ranked based on the prioritization metrics.
- 8 project sites have been selected for the *Citywide Stormwater Capture Project - Phase 1*
- *Note that this is the first phase of the project. More locations will be selected to future phases of the project.*
- Stormwater BMPs : Drywells, Pervious Pavement, Bioretention and Subsurface Infiltration.





# Stormwater BMP Drywells



Manhole Access  
Distribution Pipe

Debris Shield  
Overflow Entry

Concrete Liner

Diverted/Treated  
Water

Overflow  
Drainage Pipe

Rock/Gravel

Drainage Screen

Infiltrating Water



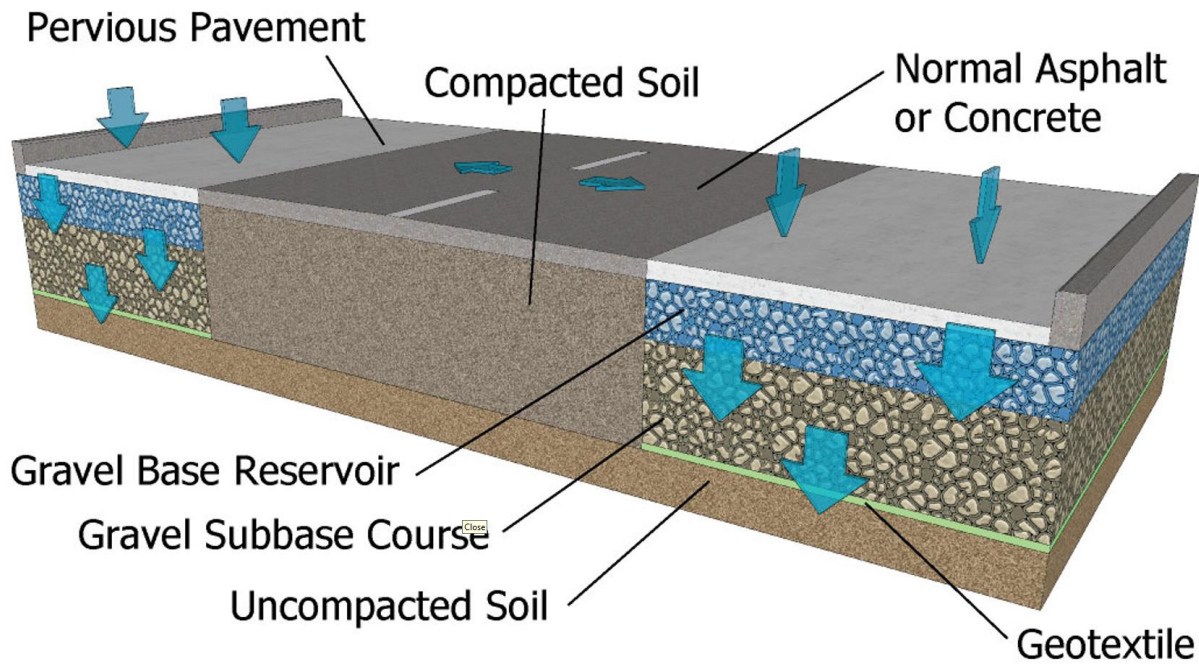


Stormwater BMP

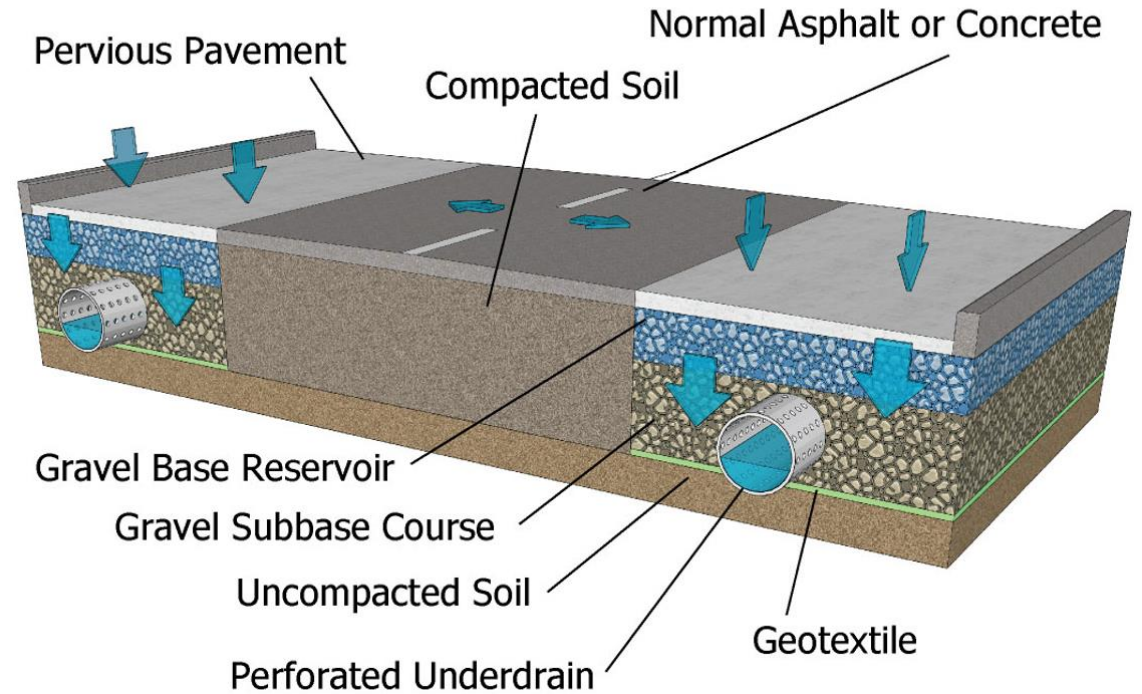
# Pervious Pavement



## Exclusively Infiltration

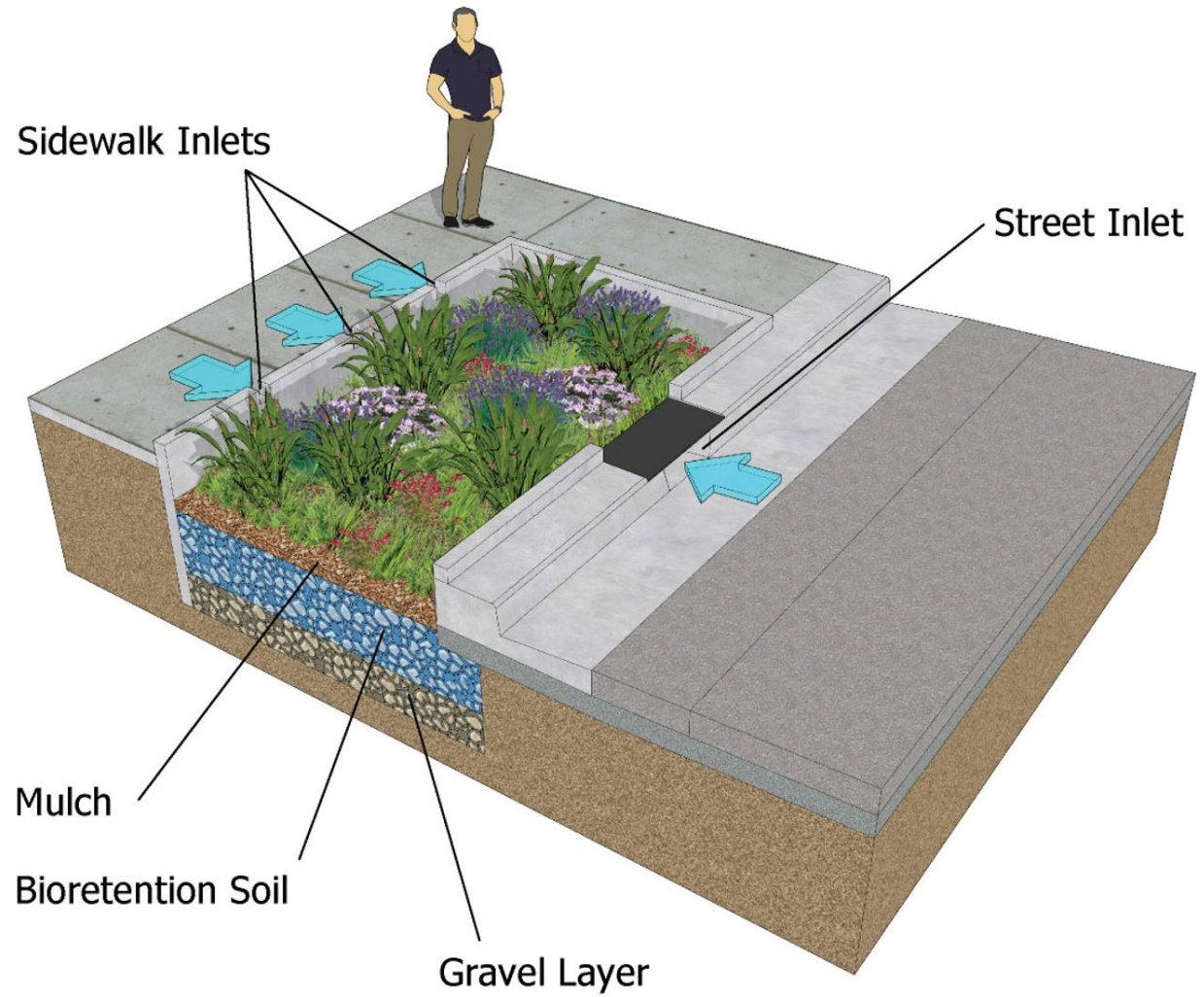


## Underdrain System





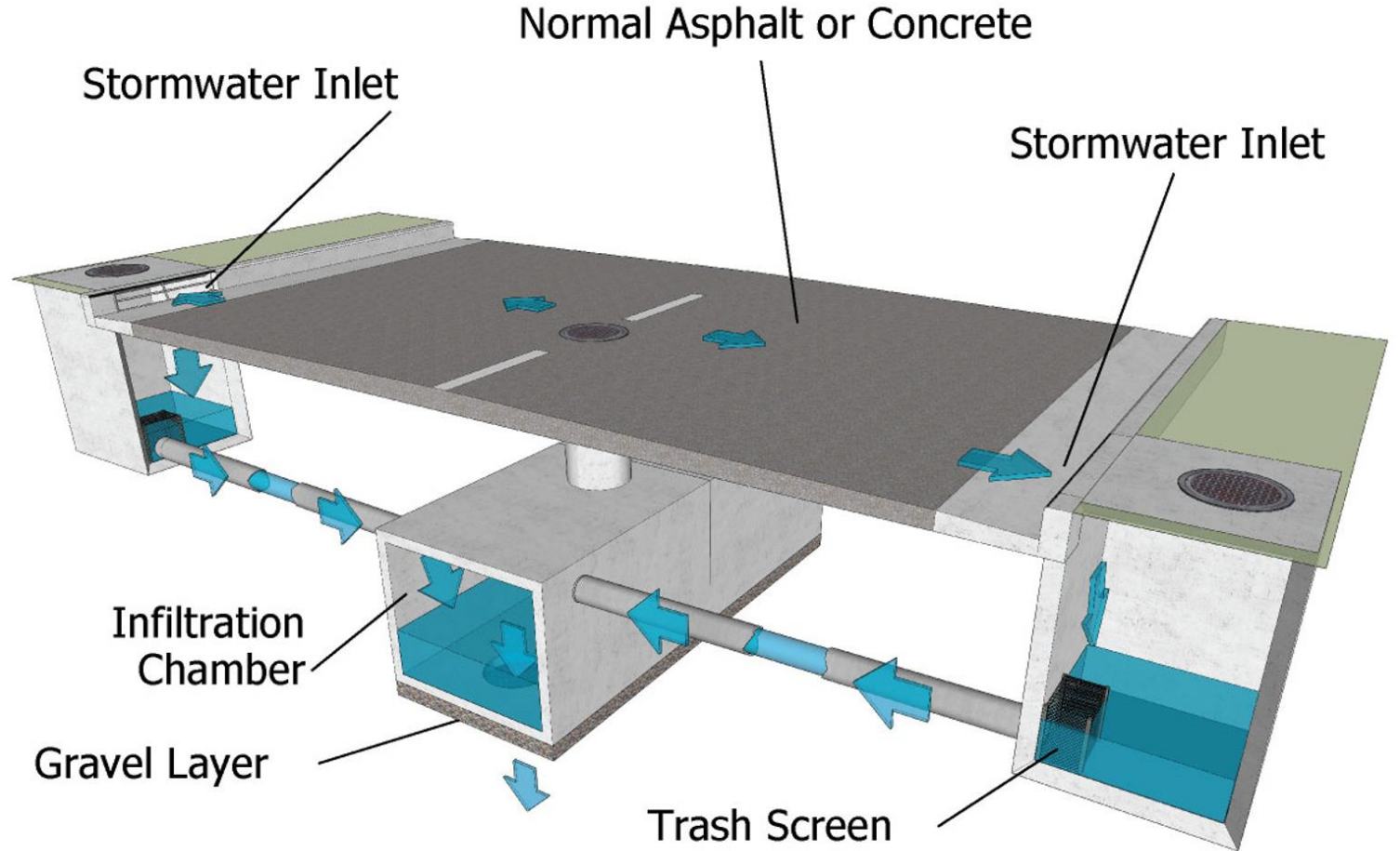
# Stormwater BMP Bioretention



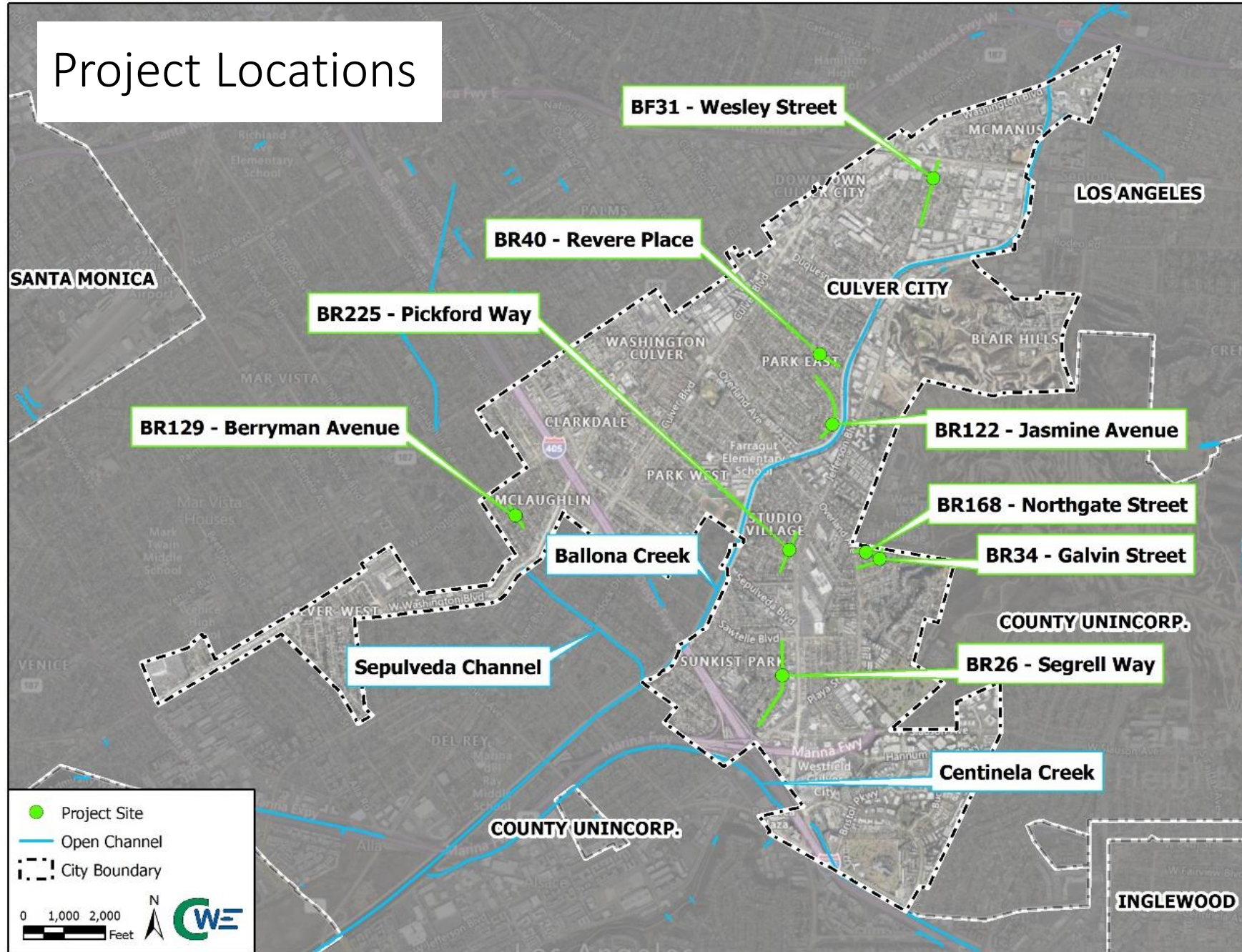




# Stormwater BMP Subsurface Infiltration

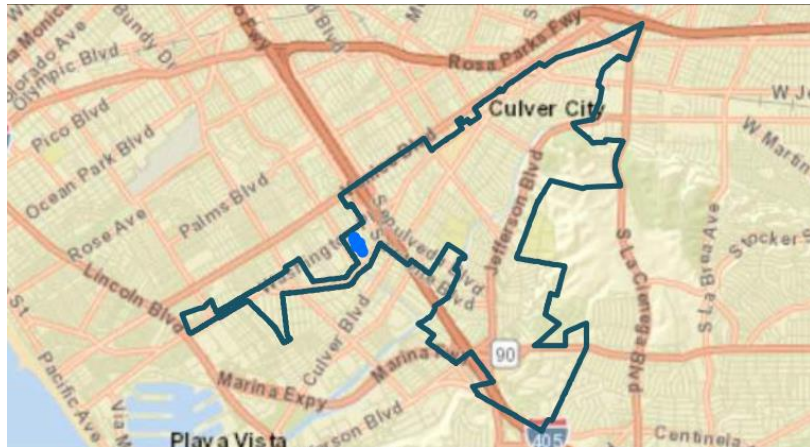


# Project Locations



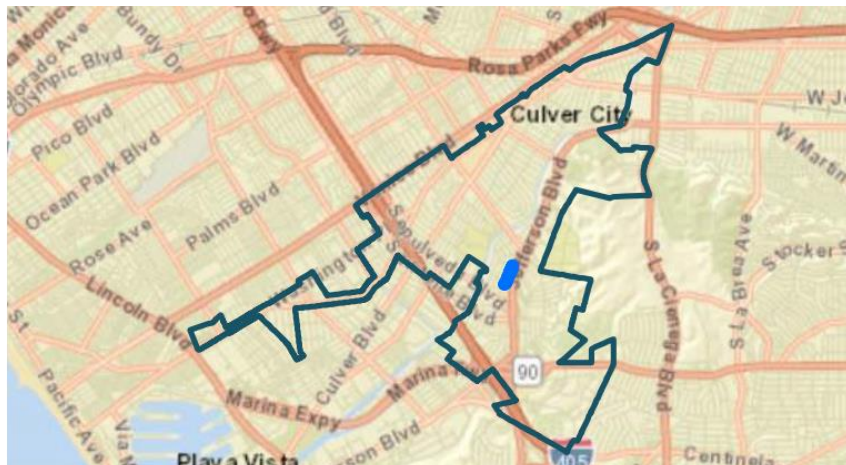
# Project Site 1 Berryman Ave (BR129)

- Pervious Pavement with under drain to storm drain on Washington Blvd.
  - Drainage Area : 1.06 acres
  - EWMP Equivalent Volume Capture: 0.03 ac-ft



## Project Site 2 Pickford Way (BR225)

- Bioretention + Pervious Pavement with underdrain to storm drain on Cota St/Westwood Blvd.
  - Drainage Area : 3.97 acres
  - EWMP Equivalent Volume Capture: 0.29 ac-ft

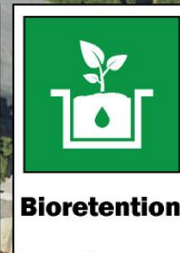


# Project Site 3 Segrell Way (BR26)

- Pervious Pavement + Bioretention
  - Drainage Area : 1.8 acres
  - EWMP Equivalent Volume Capture: 0.13 ac-ft



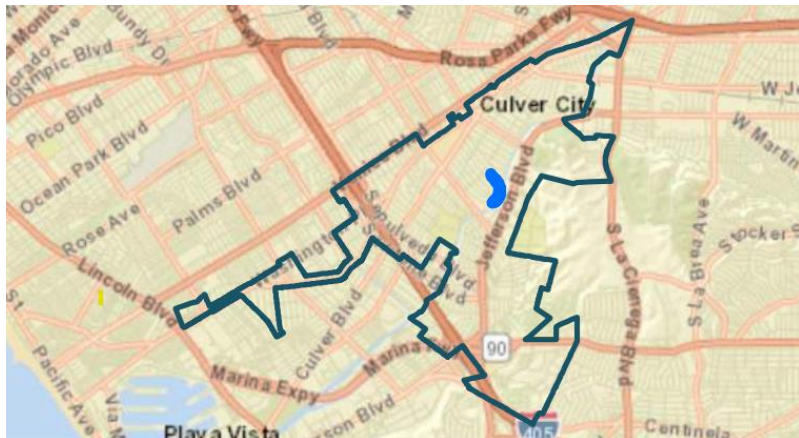
**Pervious  
Pavement**



**Bioretention**

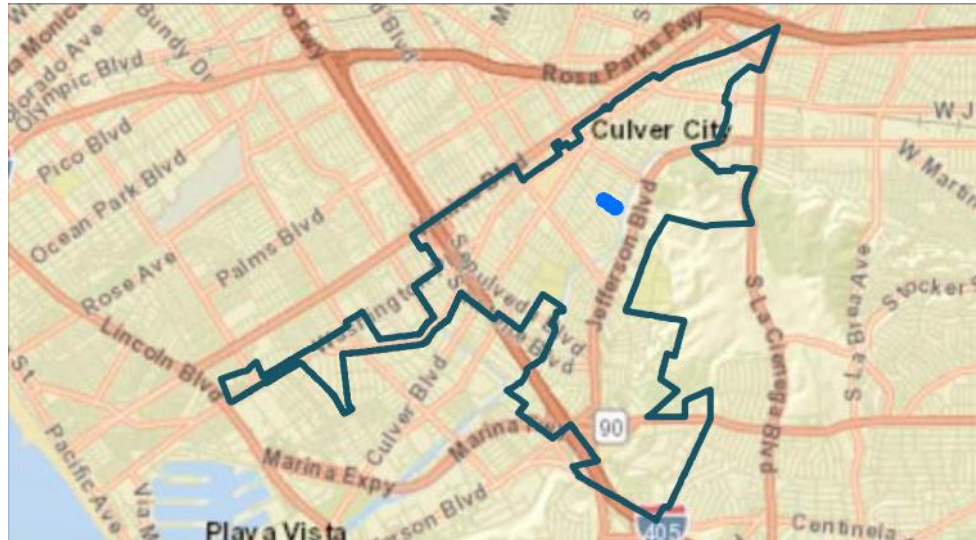
# Project Site 4 Jasmine Ave (BR122)

- Bioretention to Drywells.
  - Drainage Area : 2.02 acres
  - EWMP Equivalent Volume Capture: 0.06 ac-ft



# Project Site 5 Revere Place (BR40)

- Pervious Pavement with underdrain to storm drain catch basin at Ballona Creek.
  - Drainage Area : 0.85 acres
  - EWMP Equivalent Volume Capture: 0.02 ac-ft



# Project Site 6 Wesley Street (BF31)

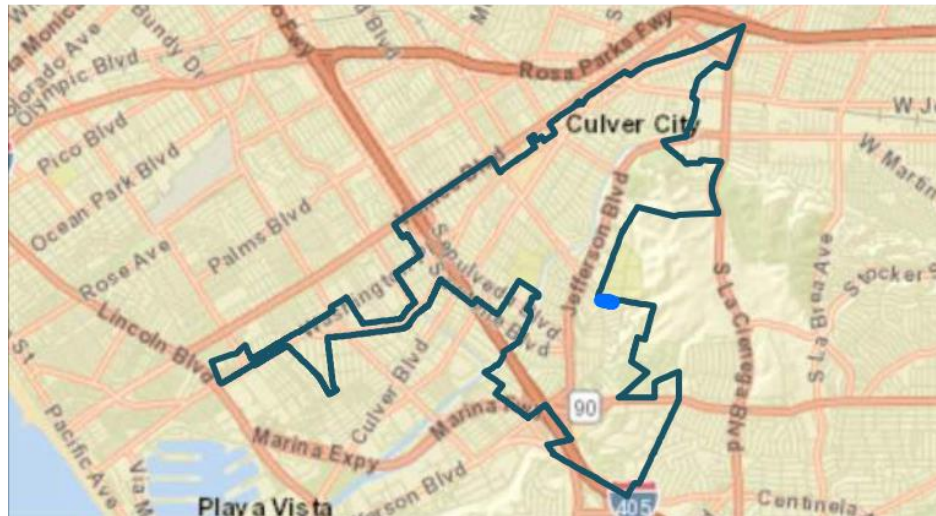
- Pervious Pavement + Bioretention
  - Drainage Area : 1.23 acres
  - EWMP Equivalent Volume Capture: 0.10 ac-ft





# Project Site 7 Northgate St (BR168)

- Subsurface Infiltration + Bioretention
  - Drainage Area : 1.59 acres
  - EWMP Equivalent Volume Capture: 0.12 ac-ft



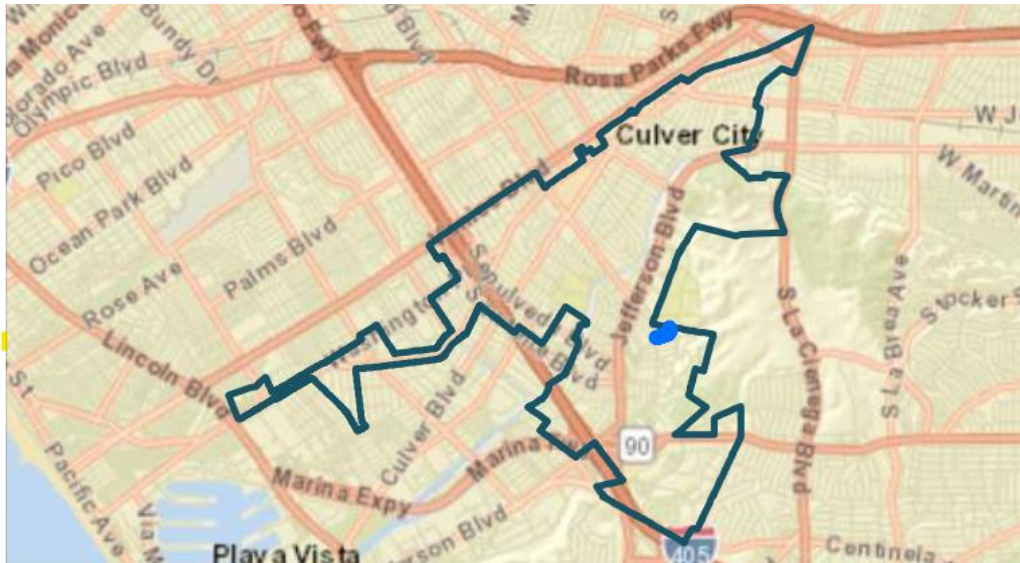
**Subsurface  
Infiltration**



**Bioretention**

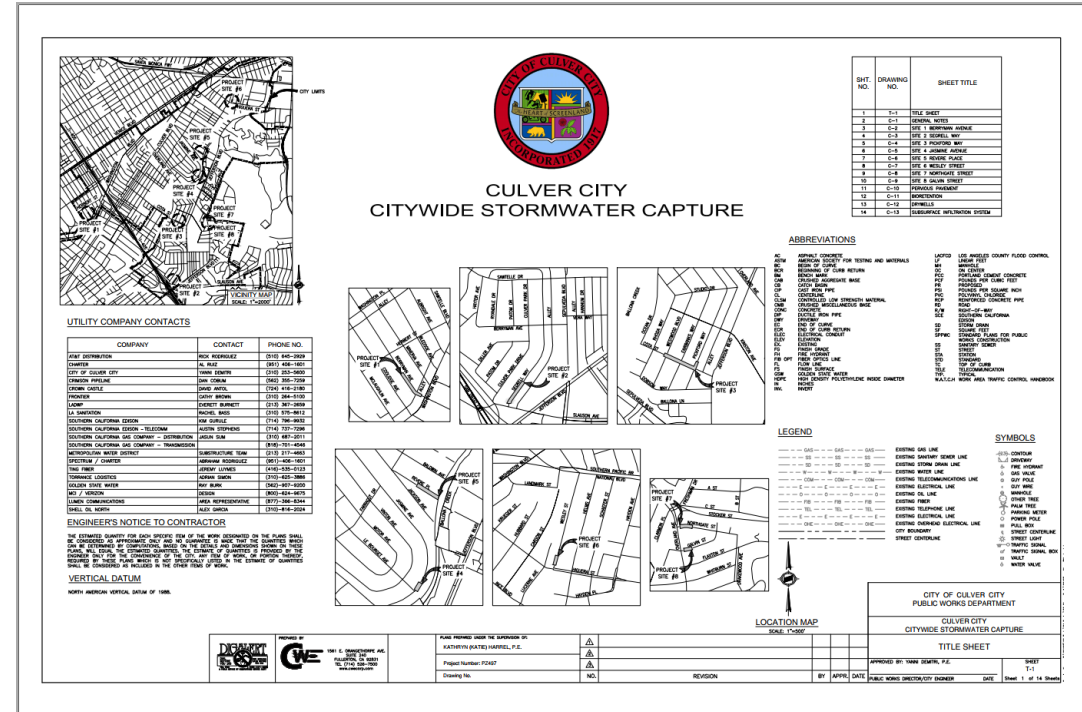
# Project Site 8 Galvin St (BR34)

- Subsurface Infiltration + Bioretention
  - Drainage Area : 1.37 acres
  - EWMP Equivalent Volume Capture: 0.10 ac-ft



# Project Schedule

- Design – Present -2024
- Public Outreach – Ongoing
- Construction – Mid 2025
- Project Completion - 2026



# Project Funding

- Local Funding
  - Culver City - Measure CW
  - Los Angeles County (Safe Clean Water Program) – Measure W
- State & Federal Funding
  - The Water Security, Clean Drinking Water, Coastal and Beach Protection Act of 2002 (Proposition 50) with an agreement with the CA State Water Resources Control Board and the Santa Monica Bay Restoration Commission.